

Great Hallingbury Highlights

Autumn 2022

Vol. 95

An independent publication giving news on matters affecting Great Hallingbury

TUDOR FESTIVAL

SATURDAY 1st OCTOBER 2022

A TALK AND BOOK SIGNING BY FAMOUS HISTORIAN JULIA FOX
THE LIFE AND CRUEL DEATH OF JANE BOLEYN - A HALLINGBURY GIRL
AND THE HISTORY OF LORD MORLEY - TUDOR DIPLOMAT by PHILIP HAYS

0930 - 1230 with refreshments - tickets £12.50

CONCERT OF TUDOR MUSIC
FEATURING RENOWNED TUDOR INSTRUMENTALIST LIZZIE GUTTERIDGE

The Colchester Waits Tudor Band
AND THE DE MERC CHAMBER CHOIR
1930 - 2200 with refreshments - tickets £15

SUNDAY 2nd OCTOBER 2022

1549 MATINS SERVICE SET TO THOMAS TALLIS

LED BY THE DISCANTVS TUDOR CHORAL MUSIC GROUP

WITH THE COLCHESTER WAITS TUDOR BAND

AND TAKEN BY THE BISHOP OF CHELMSFORD

AND FÊTE ON BOTH AFTERNOONS FROM 1230 UNTIL 1700

TUDOR THEMED FÊTE THROUGH THE AFTERNOON - COLCHESTER WAITS TUDOR BAND - HADHAM
BREWERY REAL ALE - GIGGLY PIG HOT SAUSAGES - ICE CREAM - CAKE - CREAM TEAS - GAMES -
STALLS - HISTORY DISPLAYS AND MORE - FREE PARKING AND ENTRANCE TO FÊTE AND SERVICE

THE INFAMOUS LADY ROCHFORD

ST GILES' CHURCH, GREAT HALLINGBURY

CHURCH ROAD, GREAT HALLINGBURY CM22 7TZ

Contact hallingburymorley@gmail.com



Councillors

Parish Council Chairman:

Mr. Alan Townsend Tel: 465790
7 The Grove, CM22 7TT
email: ajt1952@btinternet.com

Parish Council Vice-Chairman:

Mr. Andrew Noble Tel: 832837
Lewismead, Tilekiln Green, CM22 7TQ
email: agnoble@aol.com

Parish Councillors:

Mrs. Jules Baldwin Tel: 07979593643
Cedar Cottage, Church Road, CM22 7TS
email: mailto:julesbaldwin65@gmail.com

Mr. David Barlow Tel: 657182
128, Bedlars Green, CM22 7TL

Mr. Mark Bloomfield Tel: 501679
The Old Post Office, Bedlars Green, CM22 7TP
email: bloomfieldmotors30@yahoo.co.uk

Dr Neil Jackson Tel: 654983
Monksway, Woodside Green, CM22 7UU
email: njackson57@btinternet.com 07801 431645

Mr. Kaylash Juggurnauth Tel: 758322
Little Bradley, Church Road CM22 7TZ
email: kaylash1@gmail.com

Mr. Alan Pinnock Tel: 659071
128A Bedlars Green, CM22 7TL Mobile: 07939 603507

Clerk to the Parish Council:

Mrs. Urška Sydee Tel: 07432 297142
48 The Forest, Hatfield Broad Oak, CM22 7BT
email: greathallingburyipc@outlook.com

Website:

<https://e-voice.org.uk/great-hallingbury-parish-council>

Uttlesford District Councillors

Mr. Geof Driscoll
email: cllrdriscoll@uttlesford.gov.uk

Mr. Neil Reeve
email: cllrreeve@uttlesford.gov.uk

Essex County Councillor

Mrs. Susan Barker Tel: 01245 231250
Little Garnetts, Bishops Green, Barnston, Essex,
CM6 1NF Fax 01245 231810
email: cllr.susan.barker@essex.gov.uk

Member of Parliament

Mrs Kemi Badenoch MP
House of Commons, London SW1A 0AA
email: kemi.badenoch.mp@parliament.uk

Contacts for Village Activities

1st Great Hallingbury Brownies

Brown Owl Heather Hays 01279 651851
philipandheatherhays@googlemail.com
Alison Hutley 01279 503804

Bridge on Sundays

Organiser Christine Coultrup
bridgeonsunday@gmail.com 01279 655144

History Society

Chairman Christine Coultrup
cj@coultruponline.com 01279 655144

Neighbourhood Watch

Coordinator Jules Baldwin 07979 593643

Poppy Appeal

Coordinator Gill Sewell 01279 504990
marjorierosegs@hotmail.com

St. Giles' Church

PCC Secretary Kate Fuller 07774 159362
kate@alecfuller.com

Village Hall

Bookings Sarah Cox 01279 651757
sarahleefive@sky.com

Bookings Val Walker 01279 964140
freestylepoodles1945@gmail.com

Great Hallingbury WI

Secretary Gill Sewell 01279 504990
marjorierosegs@hotmail.com



"It keeps me from looking at my phone every two seconds."

Editorial

Life's Rich Pattern

At this time of year there is a constant flow of farm vehicles through the village bringing in the harvest. It is not the traditional image of scythes and hay wains and lots of people in the fields but modern, technical harvesting and storage handled by relatively few workers. We certainly need the food



and for the country to seek more self-sufficiency. The world is tumultuous and imports easily threatened.

Change is constant as we all know. Government goes through cycles of centralisation and decentralisation (currently too much centralisation to my mind). Large industries set up extended supply chains with just in time delivery then want to switch to local production when things get difficult. We want to buy cheaply until we realise that we now depend on some very unsavoury countries for supplies.

Certainly the current language favours greater self-sufficiency for the UK and we look to a new generation of entrepreneurs to build their businesses to help achieve this but we can't just flip back to the way things were.

There is a constant battle between change and continuity in all our lives. With the Queen's Platinum Jubilee we celebrated the constancy with which she has served our country and the stability which the continuity of her reign has given us. Then we immediately go on to discuss how things might be different when we have a new monarch.

Every season the fashion industry trumpets the new trends when many of them are often retro. Have you noticed too that nearly everyone talks wistfully of the music that was popular when they were teenagers and less enthusiastically about current pop?

We are all seeing changes in our village and further afield - new housing all around, new road layouts such as junction 7a on the M11, solar panels on house roofs and much more.

But history is important too and can teach us a lot. It is also fun and the Tudor Weekend at St Giles' in October promises to be great fun. There's lots of information about it on pages 16 and 17 so do go along and enjoy it. I look forward to seeing you there.

Editor

CONTENTS

2	- Details of Councillors and Contacts
3	- Editorial
4	- Accuro (Care Services)
	- Quiz
5	- Little Hallingbury Cricket Club
	- Hallingbury Panto Group
7	- Book Corner
8	- Easy Eating
9	- Chairman's Message
	- New Bus Service Timetable
10	- Hundred Parishes Society
11-12	- Thomas Sutton
12	- Great Hallingbury Litter Pick
13	- District News
15	- Platinum Jubilee of Queen Elizabeth
15	- Baroness Floella Benjamin
16-17	- Tudor Weekend
18-20	- Hallingbury Flower Show
21	- Mead Field Drive
23-28	- Great Hallingbury Parish Council
28	- Poppy Appeal in the Hallingburys
29	- Great Hallingbury Village Hall
31	- Great Hallingbury WI
32	- East Lodge
	- Quiz Answers
33	- Great Hallingbury History Society
	- Essex County Council
34	- Queen's Jubilee with Cream Teas
34-35	- St Giles' Gardening Group
35	- St. Giles' Services
36	- Great Hallingbury Social Evening
	- Flower Arranging Demonstration
	- Calendar

Accuro (Care Services) Charity at Start Hill

Accuro is a small charity supporting local children, young people and adults with disabilities in West Essex by providing services that are fun, safe and inclusive. These services reduce social isolation and empower members by providing accessible social and leisure opportunities that allow them to develop life skills, gain confidence and self-esteem and make friends.



Flying Seagulls at
Under 19s Club

One of our members is Ruby. Ruby has been attending Accuro services for several years now and is a member at Under 19s in Uttlesford and attends the Holiday Scheme. Ruby's confidence at Accuro has grown over the years and in April, she even took on the role of podcast host!

Accuro's podcast, *Accuro Out Loud* is published monthly and, for the 18th

episode, Ruby took to the mic and interviewed her friends and staff at Under 19s Club for a special *Club Takeover* episode.

Accuro's Community Fundraising Officer said, *Ruby was just fantastic recording the podcast, she was so confident and the episode turned out brilliantly. In fact, it's actually our most listened to episode yet, so a big thank you to Ruby for doing such a brilliant job!*

The charity runs social and leisure services across West Essex including after school youth groups, a Saturday Play Club, Adult Friendship Schemes and Life Skills sessions as well as a Holiday Project, running activities for young people during the school holidays. Families have called Accuro a *lifeline* and



Outdoor Games at
Under 19s Club

members have called their clubs their *happy place*.

Fundraising Manager, Sue Fishpool, said, *We couldn't do what we do at Accuro without the support of our local community, so we are very grateful for the support of the Hallingbury Community. We're very much looking forward to getting involved in events such as the Flower Show and Tudor Weekend.*

For more information about Accuro, visit: www.accuro.org.uk

Chloe Salisbury (Communications Officer)
chloe@accuro.org.uk

Quiz



1. Which Belfast-born actor married Emma Thompson in 1989?
2. Panther cap, deadly dapperling and funeral bell are poisonous species of what?
3. John Nettles played a detective sergeant in *Le Bureau des Étrangers* in which 1981-91 TV show?
4. The constellation Draco is named after the Latin for which legendary creature?
5. In 2001, Masada and the Old City of Acre became which country's first Unesco world heritage sites?
6. The first *Drumming Bunny* TV ad was created in 1973 for which battery brand?
7. In 1877, which Tory prime minister had Queen Victoria officially proclaimed Empress of India?
8. Which 1961 novel by John le Carré introduced the character George Smiley?
9. Situated in London's East End, what is the world's oldest surviving grand music hall?
10. In 1933, Fred Tickner created the original puppet of which mule, later seen on BBC television?

Answers on page 32

Little Hallingbury Cricket Club Summer News



It's been a very busy summer for the village cricket teams. The Saturday team, playing in division 1 of the Bishop Stortford league, has had fine wins over Thaxted, Stansted, North Weald and Potter Street. Amit Kalyankar scored centuries against Stansted and Potter Street and Joe Ash, on return from University, scored runs and took wickets and catches. 15 year old Sam Brichieri-Colombia made a positive impact with his bowling, batting, catching and enthusiasm.

Sunday teams have been playing friendly matches against local village teams with victories over Great Canfield, Thaxted, Hatfield Broad Oak and Little Hadham. We have been able to give debut games to several of our promising colts and Luke Wharton scored 100 against Great Canfield.

Our colts section has been really busy too. For the first time we introduced Cricket Allstars to the club. This is a ECB system for 5 to 8 year olds to start playing cricket.

It has been a great success with 11 colts enjoying their time at the ground. All thanks to coach Nick Thorne for setting up the group.

The under 11 team, captained by Leo Clayton, played 4 games including wins over Hockerill and Epping Forresters.

The under 13 team, captained by Beau McCardle, played 5 games with victories over Theydon Bois, Stansted and Hockerill. Beau, with Charlie Mugele, Carter Rowe and Hugo Juggurnauth proved to be the backbone of the team.



We were able, thanks to a Jack Petchey grant, to take a party of colts and parents to Chelmsford to see England Ladies beat South Africa in a T20 international. We

also arranged a free BBQ, again thanks to Jack Petchey, which was enjoyed by over 80 colts and parents.

At the BBQ I was able to present much deserved Jack Petchey Achievement Awards to Olly Harding and Carter Rowe

Keith Behagg

The main function
of the little toe on your foot
is to make sure that
all the furniture in the house
is in place.



WE'RE BACK!

We are welcoming new members both on and off stage for our January 2023 production.

If you're interested in joining, please contact us for more information!

hallingburypanto@yahoo.co.uk
07934 246960 (Marianne)



- Patios
- Paving
- Driveways
- Sleepers
- Decking
- Pergolas

STONEWOOD

Landscaping & Fencing Specialists

- Fencing
- Clearance
- Turfing
- Artificial Grass
- Sheds
- Maintenance

07964 103793

stonewoodlandscaping@outlook.com

**Spring SALE 5% on all patio works
with code: PATIO5**



After working alongside my Grandfather for over 10 years (he has 60 years experience), I decided to setup Stonewood Landscaping last year and I now have a list of very happy customers, if you would like to become one of them please get in touch.

Ryan Stacey



FREE QUOTATIONS!

07964 103793

stonewoodlandscaping@outlook.com

Find us on:



Checkatrade.com

Book Corner



Book Corner

South Of Broad

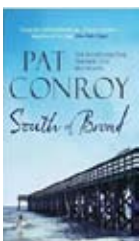
by Pat Conroy

A good book for the long winter nights - 628 pages!

Most of the book is set in Charleston over a period of thirty years and follows the life of Leo, his family and a group of young people. In the summer of 1969, Leo finds himself playing the part of a one-man welcoming committee to an unlikely group of fellow students. Trevor and Sheba Poe, talented twins who have come to live across the street with their alcoholic mother; the mountain-born orphans, Starla and Niles, considered *white trash* by many of the residents of Charleston; Molly Huger, a very pretty *debutante* and her arrogant boyfriend, Chad Rutledge; Fraser, his sister, a talented athlete and Ike Jefferson, the fiery son of the high school's black Coach, will eventually become a close-knit group of friends who forge lifelong bonds.

These friendships form the basis of the story and the author uses the group to explore a number of themes: family, home, love, sex, drugs, abuse, religion, fame, disease, commitment. (You can raise a lot of issues in 628 pages!)

Twenty years later, Leo is contacted by Sheba, now a famous actress, who tells him that she has lost contact with Trevor whom she suspects is dying of AIDS in San Francisco. Leo and most of the gang go to find Trevor and bring him back to Charleston but not before a terrifying encounter with the twins' father who is stalking them and making death threats. In spite of increasing fears for her safety and security, Sheba refuses to leave her childhood home and her dementia-crippled mother. But even the enduring friendship of the others cannot prevent a tragedy.....



Where The Crawdads Sing

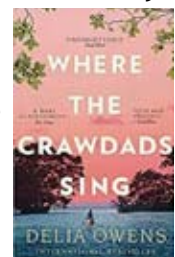
by Delia Owens

'I've known for a long time that people don't stay'

In 1952, when Kya was six, her mother walked out of her daughter's life - and also that of her husband and her four other children, all much older than Kya. Within a few weeks, her elder brother and her two sisters had also drifted away and, before very long, Jodie - seven years older than her - tells her he cannot put up with their father's violence when drunk so he will be leaving as well. Kya is left to *keep house* - a wooden shack in the middle of the coastal wetlands - for an alcoholic father who, for the next four years, often disappears for weeks at a time and finally does not come back at all. Kya is left alone - at the age of ten. With the help of a local black couple and Tate, a boy who also loves the marshes and lagoons of North Carolina, she learns to fend for herself. She continues to live in the marshes on her own and over the next thirteen years she amasses a deep knowledge of the wildlife and plants around her.

Jumping forward now to 1969, Chase Andrews, the *golden boy* from the nearby town, is found dead. For years, rumours of the strange *Marsh Girl* have haunted the area and stories about her isolation and way of life abound but, more recently, people had often seen the two of them together. Chase had led her to believe that they would get married but Kya sees an announcement in the local paper that he has become engaged to someone else. The locals immediately suspect Kya and she is charged with his murder.

At the start of her trial the judge explains that, if found guilty, Kya could face the death penalty.....



Easy Eating

Greek Lamb Meatball, Feta and Tomato bake

Ingredients - Serves 6
Meatballs

- 400g lamb mince
 - 200g lean beef mince
 - 1 small red onion
 - 3 cloves of garlic, crushed
 - 75g yoghurt
 - 75g soft breadcrumbs
 - Tsp dried oregano
 - 4 tbs olive oil
 - 400g tin chopped tomatoes
 - 600g passata
 - 200ml red wine
 - 2 1/2tsp ground cinnamon
 - 4tbs runny honey
 - 2tbs chopped fresh oregano
 - 200g feta
 - 25g pine nuts
 - 1 1/2tsp chilli flakes
- Bread, couscous or pasta to serve

Method

1. Mash the meatball ingredients with ground black pepper and salt.
2. Roll into 18 balls and chill for 30 minutes.
3. Turn oven to 150C/gas 3 and then fry the meatballs in the olive oil.
4. Add the passata, red wine, cinnamon, chilli flakes, honey, and oregano to an ovenproof baking dish. Season well
5. Sit meatballs on top, scraping up all the meaty bits from the frying pan
6. Cover and bake for 1 hour 30 minutes.
7. Turn up the heat to 220c/gas 7. Remove lid and scatter over crumbled feta. Bake for a further 15 minutes.
8. When ready to serve, sprinkle over pine nuts and chopped parsley if liked.

Lots of ingredients but a really easy bake that can't go wrong! And you can cook it in advance and reheat.



Apple rolls

Ingredients

- Packet of ready to roll puff pastry
- 2 green apples
- Zest of one lemon
- Cinnamon
- Demerara sugar

Method

1. Lay out the pastry. Mix a couple of tablespoons of sugar and some cinnamon (to your taste) with the lemon zest. Turn oven to 200C/gas 6
2. Peel and core the apple and cut into thin slices.
3. Lay in rows across the pastry (as in picture)



4. Sprinkle the sugar mixture over the apples.
5. Roll up tightly from the narrow end of the pastry.
6. Cut the roll into 10 -12 pieces. Turn each one on its side and place on a lined baking tray.
7. Sprinkle over the remaining sugar mix.
8. Bake for approximately 25 minutes

Eat on their own or with ice cream.



Parish Council Chairman



Hello to you all. As always I hope that you are keeping well.

It seems that a new strain of Covid has started in this country and is widespread. Freda and I are both presently recovering from it.

As I write this we are in the middle of the hottest weather ever recorded in the UK.

In my last message I reported what an excellent job Steve of the Uttlesford Highway Rangers had done on clearing the footpath along Church Road. Having walked this path since, it is a joy to be able to walk side by side. So it was with great sadness and disgust to see that recently someone had let their horse defecate on the footpath.

The chance for further comments on the Wren Kitchen Planning Application has now closed. We wait to see what the outcome will be.

Uttlesford District Council has still not completed the new District Plan. The publication of this keeps getting pushed back and, until the plan is verified and in place, developers appear to be applying to build wherever they choose.

Because of Covid (as Freda had it at the time) I missed the Council meeting held on 4th July. This is the first time I have ever missed a Council meeting in all my years of being a councillor. My thanks to Andrew Noble, my deputy, for standing in to Chair the meeting.

The UDC Multi-Agency trailer was at the Village Hall at the end of June. Most of the questions asked were about speeding traffic through the village, and what the Police were going to do about it. All sorts of reasons were given as to why the Police had not been doing speed checks here but, as they pointed out, speeding is a problem everywhere.

Is it me, or are the planes flying more often? Particularly during these hot nights and trying to sleep with the windows open, the noise is quite unbearable. So much for only freight flying during the night.

Essex Passenger Transport has carried out a review of bus services in Uttlesford and a new service is proposed for Great Hallingbury. The timetable is below.

The celebrations for The Queen's Platinum Jubilee were a great success across the country and enjoyed by many.

It would be nice if our politicians could all sort themselves out and just get on with running the country for the benefit of everybody. By the time you read this we will be a little closer to knowing who our new Prime Minister will be. Let's just hope that, whoever it is, they have learned lessons on how to behave and will get this great country back on its feet again.

Our Parish Council meetings take place in the Village Hall. Dates for these can be found in this magazine. Come along and see what is involved.

I thank all my fellow Councillors for their hard work and, of course, Urška, our Clerk, who keeps us all in check and up to date.

Alan Townsend.

NEW BUS SERVICE Monday to Saturday

315 Bishops Stortford - Bedlars Green - Great Hallingbury - Bishops Stortford

Bishops Stortford Interchange	0816	1016	1216	1416	1616	1816	2016
Bishops Stortford, Dunmow Rd, Nags Head	0821	1021	1221	1421	1621	1821	2021
Bedlars Green	0826	1026	1226	1426	1626	1826	2026
Great Hallingbury, Church	0828	1028	1228	1428	1628	1828	2028
Bishops Stortford Interchange	0836	1036	1236	1436	1636	1836	2036

The Hundred Parishes Society



One pleasurable autumn task is the harvesting of ripened fruits from trees in your own garden. For most of us, our cooking apple will be a Bramley's Seedling and the dessert apple an Essex-bred Discovery or a Cox's



Audley End House garden – ripening Pippin apples

Orange Pippin. Originating from central Asia, apples are incredibly varied with at least 2,000 named varieties! There are 150 varieties in the gardens at Audley End.

In the 19th century the skilled horticulturalists at the Rivers Nursery at Sawbridgeworth bred and propagated many varieties of fruit trees, including the prolific Czar plum and Conference pear, both of which are still available today. The Conference pear features in Great Chesterford's 21st-century community orchard.



Conference pear cultivated by Thomas Rivers

For commercial reasons, the range available from modern plant nurseries is limited to a few easy-to-grow varieties. However, hidden away in forgotten corners of long-established gardens within the Hundred Parishes, there will be specimens of heritage varieties of orchard trees. If you have a flavoursome, but unidentified, variety then the team at the East of England Apples and Orchards Project would be delighted to hear from you.



There is something special about growing a unique or local variety, so if you wish to plant heritage fruit trees specific to your own county, this organisation's catalogue lists a surprising number of varieties for Essex, Hertfordshire or Cambridgeshire apples and pears, as well as local plums, cherries and gages. This wide selection provides an opportunity to continue a long tradition of choosing something rather special to enjoy eating in future years.

The Whats On page at www.hundredparishes.org.uk

www.hundredparishes.org.uk often displays local apple events, for example at Rivers Orchard in Sawbridgeworth on September 4th, 18th and 24th and October 8th and at The Gardens of Easton Lodge on September 25.

Tricia Moxey, Trustee.

A Little Bit Of Light Humour

The Wartime Gardner

Mrs. Irene Graham of Thorpe Avenue, Boscombe, delighted the audience with her reminiscence of the German prisoner of war who was sent each week to do her garden. He was repatriated at the end of 1945. She recalled, *He'd always seemed a nice friendly chap but, when the crocuses came up in the middle of our lawn in February 1946, they spelt out 'Heil Hitler'.* (Bournemouth Evening Echo)

Heard on the London Underground

Ladies and Gentlemen, I do apologise for the delay to your service. I know you're all dying to get home unless, of course, you happen to be married to my ex-wife, in which case you'll want to cross over to the Westbound and go in the opposite direction.

Ladies and gentlemen, we apologize for the delay but there is a security alert at Victoria station and we are therefore stuck here for the foreseeable future, so let's take our minds off it and pass some time together. All together now.... 'Ten green bottles, hanging on a wall.....'

We are now travelling through Baker Street. As you can see, Baker Street is closed. It would have been nice if they had actually told me so I could tell you earlier but no, they don't think about things like that.

Let the passengers off the train FIRST! (Pause) Oh go on then, stuff yourselves in like sardines, see if I care - I'm going home.....

Thomas Sutton and Little Hallingbury



Adjacent to St. Mary's Churchyard in Little Hallingbury is a small graveyard. Its immaculate straight lines of gravestones might suggest that this is a military cemetery with links to the First World War but it is only since 1929 that this area has been designated for burials for the specific use of deceased brothers of Charterhouse, if they or their family so wish. The reason that this special cemetery is situated in Little Hallingbury can be explained through focusing on the life of Thomas Sutton (1532-1611), reputed at the time of his death to be the *richest commoner in England*.

Thomas Sutton was born at Knaith, Lincolnshire, the son of an official of the city of Lincoln. According to tradition he was educated at Eton and St. John's College, Cambridge. In early life he is said to have been a secretary to both Robert Dudley, Earl of Leicester, and Thomas Howard, 4th Duke of Norfolk.

His early ambition, however, was to follow a military career. In 1569 or 1570 he was appointed for life to be Master and Surveyor of the Ordinance in the northern parts of the realm, which meant that he was responsible for military supplies and fortifications in the North of England. During his residence in the north Thomas Sutton seems to have noted the abundance of coal in Durham and he obtained, first from the Bishop of Durham and afterwards from the crown, leases of land rich in coal. These possessions proved a source of great wealth and the foundation of an immense fortune.

In 1580 he settled in London, with a view to increasing his already vast resources. In 1582, as a resident of Littlebury, he married Elizabeth Dudley, the wealthy widow of a cousin. Her first husband had been John Dudley of Stoke Newington. Thomas Sutton contributed to the defence of the kingdom at

the time of the threatened Spanish Invasion of 1588. In the same year, he purchased the manor of Little Hallingbury from Robert Devereux, Earl of Essex.

Thomas and Elizabeth, being childless, were determined to use their vast fortune to found a school for boys and a *hospital for poverty stricken gentlemen, soldiers or merchants ruined by piracy or shipwreck and who were good servants of the Queen*. In 1594 Thomas conveyed by deed to Sir John Popham, Lord Chief Justice, all his manors and lands in Essex in trust to found a hospital in *Hallingbury Bouchers*. (Members of the Bouchier family were Lords of the Manor in Little Hallingbury in Tudor times).

In 1610 an Act of Parliament was passed to enable Thomas to found a hospital and school at *Hallingbury Bouchers*. However, before the plans became a reality Thomas Sutton purchased Howard House from Thomas, Earl of Suffolk, in May 1611 which he then chose to be the site of his new school and hospital.



Thomas Sutton with his plans

Howard House had been built in the middle of the 16th Century on the site of an English Carthusian Monastery, founded initially in 1371. The monastery was dissolved by Henry VIII, though some of the buildings remained. Several monks who refused to conform to Henry VIII's Act of Supremacy in 1535 were brutally executed. The order of monks who inhabited the monastery were those of La Grande Chartreuse, from near Grenoble in France, and the anglicising of their name led to *Charterhouse* being applied to their English monasteries and this name remained attached to the site in London. Thomas, Earl of Suffolk, used the proceeds of the sale of Howard House to build Audley End.

continued on page xxx

continued from page xxx

Thomas Sutton called his new building *Sutton's Hospital in Charterhouse*. Daniel Defoe described the hospital and school as *the greatest gift that was ever given for charity, by any one man, public or private, in this nation*.

After building work had been completed, Charterhouse opened its doors in 1614 for 80 elderly men, or brothers, and 40 scholars. The school and hospital flourished. In 1872 the school moved out of London to Godalming in Surrey. Every year a Founders Day Service in the school remembers Thomas Sutton and the village of Little Hallingbury where the school might have been built. Since 1929 all deceased brothers of the Charterhouse have been buried in the special cemetery in Little Hallingbury, if they or their families have expressed a wish for burial there. The Governors of Charterhouse are the patrons of St. Mary's Church and since 1669 have had the right of appointing the rector.

Thomas Sutton died in Hackney on 12th December, 1611, before the opening of *Sutton's Hospital in Charterhouse*. His wife had previously died in June 1602 in Balsham, Cambridgeshire, and she was buried in Stoke Newington where there is a memorial to her and her first husband, John Dudley.

Thomas Sutton was initially buried in Christ Church, London, but on 12th December, 1614, his body was carried by the brethren of his hospital to a chapel in Charterhouse and deposited in a vault on the north side. Over his remains a magnificent tomb was erected in 1615.



We are left to contemplate what the Hallingburys would look like today if Charterhouse School and Hospital had been built in Little Hallingbury in the early 17th Century.

Thomas Sutton will be remembered in a special display in St. Giles' Church, celebrating Tudor Personalities linked to the Hallingburys, to be set up by members of the Great Hallingbury and Little Hallingbury History Societies as part of the Tudor Weekend to be held on 1st and 2nd October.

Philip Hays

Love Your Village? Join the Litter Pickers



We all enjoy living here in Great Hallingbury

Sadly people passing through don't always show the respect for the village that we would like to see and leave their litter along the road.

***So let's all get together with
Mark and Joanne Bloomfield on***

Sunday, 8th October, 2022

***and smarten up the village by clearing
away the litter***

***Don't forget to clear the area
around your own property***

*Bags, grabbers and high vis jackets will
be available to collect from the Old Post Office
at Bedlars Green on Saturday 7th October*



**Working together
makes light work of
a chore**

Everyone can help

Mark Bloomfield 01279 501679

District News

Cllrs Geof Driscoll and Neil Reeve

Another month has passed and, when writing this, the weather is good, summer is upon us and it is holiday time. Neil and I would like to wish you well and for those who will be taking a holiday, enjoy, take care and stay safe.



UDC Offices & New Bin Lorry Depot

In May, the council refuse vehicle operations moved out of Shire Hill in Saffron Walden and also a small depot in the centre of Dunmow. The new location is the refurbished former banana warehouse at Little Canfield. The Dunmow site was portacabins and Shire Hill is far too small for all the vehicles and facilities. One of the small street sweepers will remain in Walden to cover the north of the district as they don't go fast enough to be based at Canfield.

Little Canfield is much larger and vastly better. The new site has a truck wash which cleans and recycles the water, thus hugely reducing water consumption. There is also a workshop with an inspection pit and brake testing equipment - commercial vehicles are required to be inspected every six weeks. I also believe that there are vacancies for drivers and loading staff at the location; check out the UDC website.



Ward Surgeries

A reminder that Neil and I hold two surgeries in the Ward each month. The first being on the first Tuesday at Great Hallingbury Village Hall. The second surgery will be held at the Dukes Head PH in Hatfield Broad Oak on the third Friday of the month. Both surgeries start at 2pm and finish no earlier than 4pm. You do not have to book an appointment, just turn up. We do realise that some of you may be working or otherwise busy around these times, so we are still looking at an evening session somewhere in the Ward. It would be good to receive some feedback on that idea.

And a reminder that, should you need to contact us, you can email us on the following addresses

cllrdriscoll@uttlesford.gov.uk

cllrreeve@uttlesford.gov.uk

**ST GILES CHURCH, CHURCH ROAD,
GREAT HALLINGBURY, CM22 7TZ**

**COFFEE
MORNING**

10:30am - 12:30pm

PLANTS - CRAFTS - BRIC A BRAC

SATURDAY 3rd SEPT, 5th NOV, 3rd DEC

EVERYONE WELCOME

www.hallingburychurches.co.uk



OPEN DAY
on Friday 30th September,
from 9.30 to 11.30am.
Please call or email us at
schooloffice@howegreenhouse.essex.sch.uk to register
your interest.



HOWE GREEN HOUSE SCHOOL
Independent Co-ed Prep School
for 4 to 11 years
and **Little Oaks Nursery School**
for 2 to 4 years
www.howegreenhouseschool.co.uk
01279 657706



Care in the heart of your own home

Are you or an elderly loved one looking for extra care and support at home in **Great Hallingbury or the surrounding areas?** Then our local carers are here to help.

Novus Care is regulated by the Care Quality Commission and can provide a qualified carer to support your loved one in their own home from just **30 mins per week to full-time live-in care.**

For more information or to arrange a **FREE** assessment, please call: **01268 960285** or email: hello@novus-care.com

www.novus-care.com

Platinum Jubilee of Queen Elizabeth II

Lasting Memorials

Celebrations for Her Majesty's Platinum Jubilee were enjoyed all round the country and many towns and villages have established a lasting memorial to such an historic occasion. Here in Great Hallingbury, we have two such tributes.

On 3rd July, six heritage fruit trees were planted in the grounds of St Giles' Church and were blessed by the Rev. Canon David Herrick. The trees were purchased with funds from Uttlesford District Council and will be tended and nurtured by the Gardening Club members who look after the churchyard.



Then, at the Village Hall, we have a brand new flagpole located near the village sign and the seat commemorating Ron Coultrup. I was privileged to be asked to run up the first flag, the St George's flag, in time

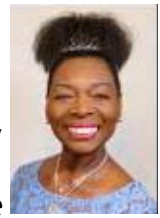


for the Hallingbury Flower Show. We have, of course, a Union Jack also (and woe betide anyone who flies it upside down - a signal of distress) and Village Hall Chairman, Lee Cox, promises one or two surprises too. A plaque recording the jubilee will be added to the flagpole shortly.

It is good to have permanent reminders of such a wonderful occasion. That's how we help to create history for future generations.

Christine Coultrup

Baroness Floella Benjamin In Great Hallingbury



Speech Day at Howe Green House School is always a joy to attend and see the children blossoming with the education and upbringing they receive there.

This year, the prizes were presented by Baroness Floella Benjamin, DBE. Known to many who grew up in the seventies and eighties from Play School, Baroness Benjamin talked to the children of her experiences of racism when she came to this country from Trinidad with her family as part of the Windrush generation.

She told the story of the Three Little Pigs - with great elan and audience participation - to illustrate the need for the children to build their futures on the secure brick base of education. With considerable passion she exhorted the pupils to learn and practice her 3 C's - **consideration** and respect for others, **contentment** with what one has and **confidence** in yourself as a person, underscored by a further C, **courage** to stick to these principles. And then Floella sang to them Charlie Chaplin's song, *Smile*. The children sat in rapt attention as she talked caught up, I feel, by her passion. She certainly has an enviable talent for communication with young people.

Later two representatives from the sixth year leavers talked lucidly of their life and experiences at the school. They both referred to the impact of the covid pandemic which was a reminder of what a large part of their young lives has been affected. They also both exhorted their fellow pupils to take advantage of all the education and experiences they are being offered at the school, a sentiment which I am sure must

have delighted Baroness Benjamin.

Christine Coultrup
Editor



TUDOR FESTIVAL

SATURDAY 1st OCTOBER 2022

A TALK AND BOOK SIGNING BY FAMOUS HISTORIAN JULIA FOX
THE LIFE AND CRUEL DEATH OF JANE BOLEYN - A HALLINGBURY GIRL
AND THE HISTORY OF LORD MORLEY - TUDOR DIPLOMAT by PHILIP HAYS
0930 - 1230 with refreshments - tickets £12.50

CONCERT OF TUDOR MUSIC
FEATURING RENOWNED TUDOR INSTRUMENTALIST LIZZIE GUTTERIDGE
The Colchester Waits Tudor Band
AND THE DE MERC CHAMBER CHOIR
1930 - 2200 with refreshments - tickets £15

SUNDAY 2nd OCTOBER 2022

1549 MATINS SERVICE SET TO THOMAS TALLIS
LED BY THE DISCANTVS TUDOR CHORAL MUSIC GROUP
WITH THE COLCHESTER WAITS TUDOR BAND
AND TAKEN BY THE BISHOP OF CHELMSFORD
AND FÊTE ON BOTH AFTERNOONS FROM 1230 UNTIL 1700

TUDOR THEMED FÊTE THROUGH THE AFTERNOON - COLCHESTER WAITS TUDOR BAND - HADHAM
BREWERY REAL ALE - GIGGLY PIG HOT SAUSAGES - ICE CREAM - CAKE - CREAM TEAS - GAMES -
STALLS - HISTORY DISPLAYS AND MORE - FREE PARKING AND ENTRANCE TO FÊTE AND SERVICE

THE INFAMOUS LADY ROCHFORD

ST GILES' CHURCH, GREAT HALLINGBURY
CHURCH ROAD, GREAT HALLINGBURY CM22 7TZ
Contact hallingburymorley@gmail.com



On the 1st and 2nd of October we will be holding a Tudor Festival at St Giles'. The purpose of the series of events is to raise funds for the church and also for St Mary's in Little Hallingbury.

During lock-down St Giles' was visited by a film crew from Channel 5 and it was this that sparked the idea for the Festival.

During the Tudor period what is now Great, and a large part of Little, Hallingbury were combined into one. This was known as Hallingbury Morley, named after the local Lords who were very powerful. They were leading lights at the courts of Richard III, Henry VII, Henry VIII and, indeed, Queen Elizabeth I.

They are most known for the fact that a daughter of the family, Jane, was a lady-in-waiting to several of Henry VIII's wives, herself married Anne Boleyn's brother at St Giles' and was executed with Katherine Howard on Tower Hill. She was the reason for the film crew.

From this little acorn we have developed an entire weekend of exciting and informative events for the whole community.

Saturday morning will begin with talks about the history. The principal biographer of Jane Boleyn, well-known historian and author Julia Fox, heads the line-up. She will be signing copies of her book about Jane after her talk. Local historian Philip Hays will also be talking about Jane's father - the hugely important Henry Parker, Lord Morley.

In the afternoon we will be holding a Tudor themed fete - which will also run on the Sunday afternoon. This will be a traditional fête in the churchyard with a strong Tudor flavour.

In Tudor times the church raised funds by holding what was known as the *Drinking* - ale was sold in the churchyard. Hadham Brewery has agreed to support us in a recreation and the excellent Hadham Gold will be on sale. There will also be sausages, ice cream, cream teas and cakes.

The Colchester Waits, a period Tudor band, will be entertaining us and we will



have other costumed re-enactors in our history corner. A number of local businesses are also supporting us with stalls and there will be significant shopping opportunities!

The Waits are also helping us out in a Tudor concert on the Saturday evening, an event which will also feature the de Merc Chamber Choir and renowned Tudor instrumentalist Lizzie Gutteridge (below).



Continuing with our theme, on the morning of Sunday, 2nd October, we are holding a recreation of a 1549 Matins and, in what should be a very special event, the choir will be joined by the DISCANTVS sacred music group, singing music by Thomas Tallis.

We are delighted that the Bishop of Chelmsford has agreed to take the service, and we intend to have her played in and out of the church by the Colchester Waits. It should be a spectacle the like of which has not been seen at St Giles' for 500 years!

Over the course of the weekend the Village Hall will be hosting a schools' art competition on the theme.

There are lots of opportunities to get involved if you would like to help out. We do need volunteer staff for both days of the event and would welcome any singers who might like to join the choir for the Matins.

Just as importantly, we are now selling tickets for the History talks and the Saturday concert. Do please support your churches - they are a vital focus for our community. In this day and age I am afraid that it is very much a case of *use it or lose it!*



TUDOR FESTIVAL

SATURDAY 1st OCTOBER 2022

A TALK AND BOOK SIGNING BY FAMOUS HISTORIAN JULIA FOX
 THE LIFE AND CRUEL DEATH OF JANE BOLEYN - A HALLINGBURY GIRL
 AND THE HISTORY OF LORD MORLEY - TUDOR DIPLOMAT by PHILIP HAYS
 0930 - 1230 with refreshments - tickets £12.50

CONCERT OF TUDOR MUSIC
 FEATURING RENOWNED TUDOR INSTRUMENTALIST LIZZIE GUTTERIDGE
 The Colchester Waits Tudor Band
 AND THE DE MERC CHAMBER CHOIR
 1930 - 2200 with refreshments - tickets £15

SUNDAY 2nd OCTOBER 2022

1549 MATINS SERVICE SET TO THOMAS TALLIS
 LED BY THE DISCANTVS TUDOR CHORAL MUSIC GROUP
 WITH THE COLCHESTER WAITS TUDOR BAND
 AND TAKEN BY THE BISHOP OF CHELMSFORD

AND FÊTE ON BOTH AFTERNOONS FROM 1230 UNTIL 1700

TUDOR THEMED FÊTE THROUGH THE AFTERNOON - COLCHESTER WAITS TUDOR BAND - HADHAM
 BREWERY REAL ALE - GIGGLY PIG HOT SAUSAGES - ICE CREAM - CAKE - CREAM TEAS - GAMES -
 STALLS - HISTORY DISPLAYS AND MORE - FREE PARKING AND ENTRANCE TO FÊTE AND SERVICE

THE INFAMOUS LADY ROCHFORD

ST GILES' CHURCH, GREAT HALLINGBURY
 CHURCH ROAD, GREAT HALLINGBURY CM22 7TZ
 Contact hallingburymorley@gmail.com

Below is a summary of the events with timings and contact details for information and ticket sales. *Russell Robinson*

Tudor Weekend Programme

Saturday, 1st October 2022

History Talks

10 am - talk by historian Julia Fox on Jane Boleyn with talk by Philip Hays on Baron Morley. Julia will be signing a limited number of books for purchase.

Tickets £12.50 including refreshments

Tudor Fête

1 pm until 5 pm - Tudor themed fête in the grounds of St Giles' and schools' art in Great Hallingbury Village Hall.

Entrance free

Tudor Concert

7 pm - concert in St Giles'

Tickets £15 including refreshments

Sunday, 2nd October 2022

1549 Sung Matins

11 am in St Giles'

Tudor Fête

1 pm until 5 pm - Tudor themed fête in the grounds of St Giles' and schools' art in Great Hallingbury Village Hall.

Entrance free

Contacts

For information or ticket sales please email hallingburymorley@gmail.com or call 07756142890.

You can also follow us on Facebook by searching *Hallingbury Morley Events*.



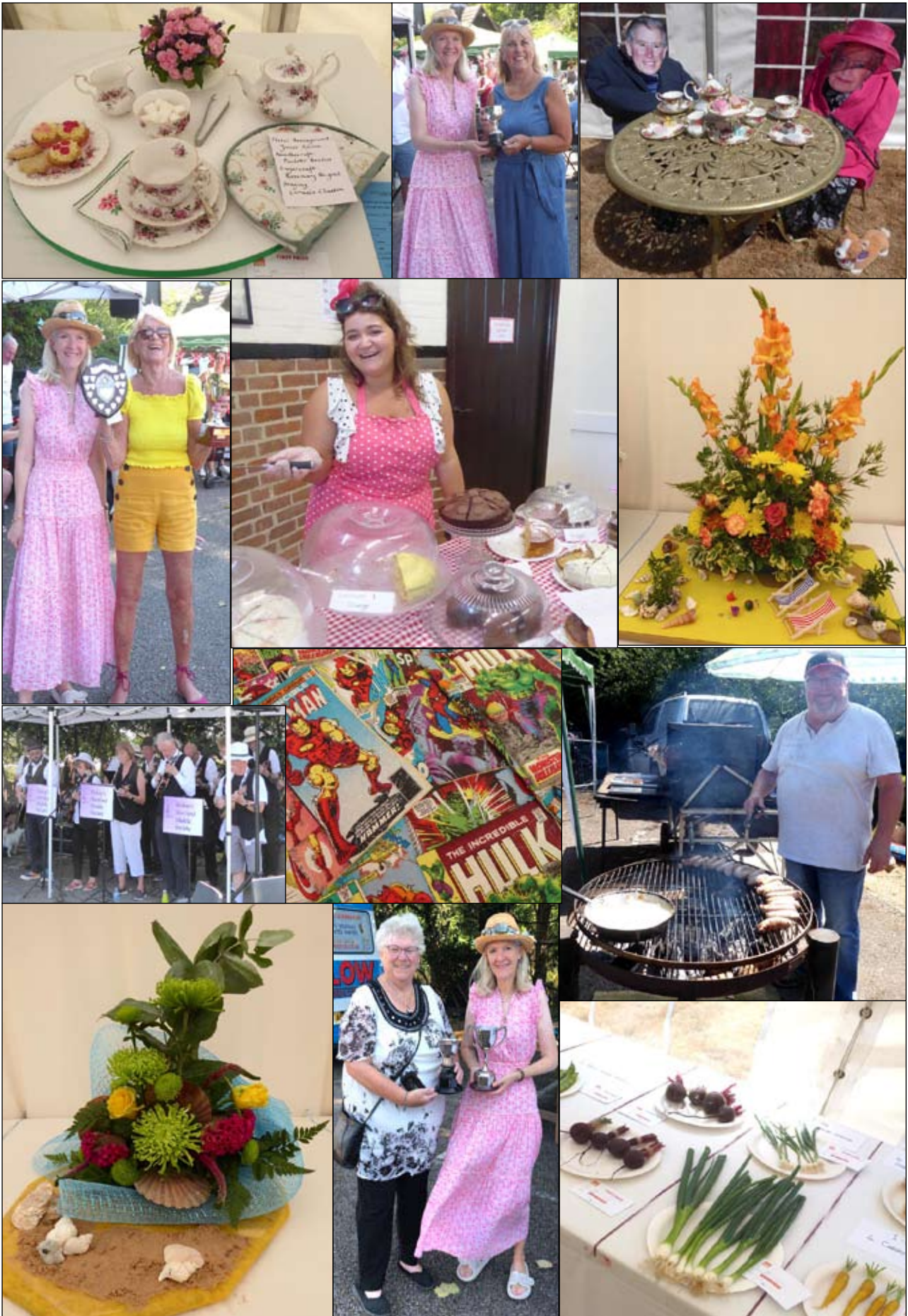
The Return of the Some of the Entries, some of the



List of Great Hallingbury winners on page 20

Hallingbury Flower Show

Winners and some of the Sights



Photographs by courtesy of Beverly Moore



HALLINGBURY FLOWER SHOW

The Hallingbury Flower Show 2022 was back in business after two years off. We had a lovely day at Great Hallingbury Village Hall with an excellent turnout. There were slightly fewer show entries than in 2019 but we did attract some new entrants who then went on to win cups so we feel sure they will be back!

BSUS kept us all entertained with their upbeat ukuleles and we enjoyed a delicious hog roast courtesy of Jay and plenty of ice cream. There was a super friendly atmosphere throughout and it did feel good to be back.

The bar was kept busy as it was rather a hot day and Tashy's Tea Tent, relocated this year inside the Village Hall, was a lovely cool place to catch up with friends and family and eat lots of delicious cake.

The stall holders came with a wide array of fantastic things on offer and the Raffle had some fabulous prizes to be won.

The Hallingbury Flower Show committee would like to thank everyone who came and supported the Show and everyone who helped and contributed. We are looking forward to next year!

Oriel Gordon



Prizewinners 2022

Class 1 - Vegetables

Challenge cup awarded to Diane Conway

Class 2 - Fruit

Challenge cup awarded to Sandra Hatt

Class 3 - Flowers

Challenge cup awarded to Rex Baldwin

Class 4a - Flower Arrangement

Challenge cup for first place awarded to Beverly Moore

Cup for best in show to Beverly Moore

Class 4b - Novice Flower Arrangement

Streeter cup for first place in Novice class awarded to Jackie Cable

Class 5 - Gardens

People's choice trophy to Carole Morris

Class 6 - Preserves

Rogers cup (preserves) awarded to Diane Conway

Class 6 - Baking

Challenge cup (baking) awarded to Freda Townsend

Class 7 - Needlework

Challenge trophy awarded to Sandra Hatt

Class 8 - Handicraft

Challenge trophy for best exhibit awarded to Robert Carey

Class 10 - Children's Classes

KS1 First place - Grace Smith

KS2 First place - Amelia Beverley

KS2 third place - Jenson Smith

KS3 Challenge Cup - Isabelle Brown

Class 11 - Photography

The Baldwin cup awarded to Alan Pinnock and Thomas Cubitt

Class 12 - Co-operative Class

The Elsenham Rose Bowl awarded to Great Hallingbury WI

Class 13 - Scarecrow Challenge

Challenge cup awarded to Isabelle Brown

Best all round show exhibitor

Petts plate awarded to Diane Conway

The Waving Rabbit

A man is driving along a highway and sees a rabbit jump out across the middle of the road.

He swerves to avoid hitting it but unfortunately the little rabbit jumps right in front of the car. The driver, a sensitive man as well as an animal lover, pulls over and gets out to see what has become of the rabbit.

Much to his dismay, the rabbit is dead. The driver feels so awful that he begins to cry.

A beautiful blonde woman driving down the highway sees the man crying on the side of a road and pulls over. She steps out of the car and asks him what's wrong. *I feel terrible, he explains. I accidentally hit this rabbit and killed it.* The blonde says, *Don't worry.*

She runs to her car and pulls out a spray can. She walks over to the limp, dead rabbit, bends down and sprays the contents onto the rabbit. The rabbit jumps up, waves its paw at the two of them and hops off down the road.

Ten feet away the rabbit stops, turns around and waves again. He hops down the road another 10 feet and waves, hops another ten feet, turns and waves and repeats this again and again and again until he hops out of sight.

The man is astonished. He runs over to the woman and demands, *What is in that can? What did you spray on that rabbit?*



The woman turns the can around so the man can read the label. It says: *Hair Spray - Restores life to dead hair and adds a permanent wave.*

Mead Field Drive

Update

The emphasis of the work at Mead Field Drive for the last few months has been focused on the Social Units. I think it is unfortunate that such a clinical name is given for such lovely houses.



They are beautifully designed, built to a high standard

and some of them are enhanced by a very pleasant and secluded woodland setting.



The first two units of social houses and three shared ownership units will be ready for occupation at the end of September.

The remaining one bedroom bungalow, three three bedroom terraced houses and two two bedroom social houses will be handed over to Uttlesford District Council once completed for them to allocate to those on their lists. I understand and hope that preference will be given to applicants with a local connection. They will then be managed by Eastlight Community Homes which is a housing association acting on behalf of Uttlesford.

Several of the private housing units are now



occupied and, subject to market conditions in this volatile world, the development should be complete at the end of 2023.

Andrew Noble



NO "CALL OUT" CHARGE JUST TAKING A LOOK

Often problems are left because of that underlying fear of expense, let's face it, times are tough. We do not charge our clients to come and take a look, assess and discuss the cost before starting work, rest assured.

**HEATING, PLUMBING AND AIR SOURCE
SPECIALISTS**



DAVID BILLINGTON
Mobile: 07545344102



Highlights from the Minutes of Meetings of Great Hallingbury Parish Council

9th May and 4th July, 2022

Present (at one or both meetings): Cllr A Townsend (Chairman), Cllrs J Baldwin, D Barlow, M Bloomfield, N Jackson K Juggurnauth, A Noble and A Pinnock, Mrs U Sydee (Clerk), County Cllr S Barker, District Cllr N Reeve and members of the public

ANNUAL COUNCIL MEETING

Appointments

Election of Chairman for 2022/2023

Cllr Alan Townsend was the sole nominee proposed and seconded and he was duly elected.

Election of Vice-Chairman for 2022/2023

Cllr Andrew Noble was the sole nominee proposed and seconded and duly elected.

Planning Committee 2022/2023

Cllrs M Bloomfield, A Noble, A Pinnock and A Townsend.

Working Groups

Airport: Cllrs D Barlow, M Bloomfield, N Jackson, K Juggurnauth, A Noble, A Townsend.

Police & Neighbourhood Watch: Cllrs J Baldwin, D Barlow, K Juggurnauth, A Townsend

Parish Plan: Cllrs D Barlow, N Jackson, A Pinnock and A Townsend.

Housing: Cllrs M Bloomfield, K Juggurnauth and A Noble.

Neighbourhood Watch: Cllr J Baldwin

Playground: Cllrs J Baldwin and M Bloomfield.

Representatives to Other Organisations

Road Safety - Cllr A Townsend

Transport - Cllr A Noble

Health - Cllr N Jackson

Footpaths - Cllr A Pinnock

Tree Warden - Cllr A Townsend

UALC - Cllr A Townsend

TPLPG (former USAG) - Cllrs N Jackson and A Townsend. On standby: Cllr J Baldwin

SAW (former SSE) - vacancy

Calendar of Meetings 2022/2023

04 July 2022

12 September 2022

07 November 2022

09 January 2023

06 March 2023

20 March 2023

Annual Parish Meeting - 15 May 2023

All meetings will be held in the Village Hall starting at 8 pm.

ORDINARY MEETINGS

Chairman's Communications

Cllr A Townsend reported his activities:

- Attended AGM in Little Hallingbury seeking more volunteers for speedwatch
- Local Council Liaison Forum
- EALC Executive Committee meeting
- Parish Forum meeting
- Meeting with Cllr Scott
- UALC meeting and AGM
- Met Residents Association
- Met Highways Rangers
- TPLPG meeting
- Howe Green House School jubilee celebrations
- Spoke to a resident re infringement of planning
- Uttlesford Community Roadshow in the village
- Weekly checking defibrillator
- Weekly meeting with the clerk

Uttlesford District Council

Cllr Reeve reported that:

- Local Plan - delay due to quality check before the list of preferred sites is published for consultation
- Investment programme - The Council must ensure that is funded and some future cuts are expected.
- Planning Department is in special measures. Two measures are checked: speed (which was fine) and quality (more than 10% difference between those refused by UDC and approved on appeal). A new Director of Planning started June 2022 and steps are being taken to improve.
- Economic Development - helping businesses to recover after Covid-19.
- Ukraine - working tirelessly to help to accommodate refugees with families

Litter Pick

The Chairman thanked Cllr M Bloomfield for organising the Spring litter pick.

Road Flooding near Captains

Work has been scheduled for July.

Hallingburys' Speedwatch Group

Volunteers are needed to do speed checks

Great Hallingbury Neighbours Association

Agreed to approve £500 grant for various expenses.

Road Signs

Perhaps two additional and larger *low bridge ahead* signs could be installed before turning into Church Road and Start Hill

Airport

Cllr K Juggurnauth had been seeking information re offers/support for residents living under the flight path to reduce noise generated by aircraft.

Community Orchard

The Council supported the final proposal for a community orchard on land off Jenkins Lane owned by Bishop's Stortford Town Council although located in Great Hallingbury.

Footpath Adjacent to 125 Church Road

The Council has no objections to a resident's proposals to block off the entrance to the field by laying concrete obstacles. The farmer should be consulted as there is a farm entrance not currently in use.

Planning

Application No // Site and Development // Decision (the Council's comments are shown in brackets)

Application Decisions

UTT/20/1098/FUL // Land to The East of Tilekiln Green // Construction of 15 new dwellings, including 6 affordable dwellings, vehicular access and associated parking and landscaping // Awaiting decision (There should be provision for electric car charging and enough parking spaces for increasing numbers of cars to each household.)

UTT/21/2755/OP // Cannons Yard, Bedlars Green // Outline application with all matters reserved for 14 dwellings (Class C3), parking, landscaping and all associated development // Approved (All the trees should be kept)
UTT/21/3121/HHF // 83 Woodside Green // Proposed demolition of existing conservatory and boiler room, re-building of boiler room and erection of rear extension, re-thatching and insulating roof void. Reconfiguring internal rooms and joinery alterations. Garage conversion into part store, part accommodation to include two roof lights. Replacement of existing roof light and addition of new extractor fans // Approved (No objections.)

UTT/21/3339/FUL // Old Cottage, Start Hill, Stane Street // Proposed erection of 7 dwellings including the closure of existing access, creation of new access and associated infrastructure // Approved (No objections.)

UTT/21/3483/FUL // Lodge Farm, Woodside Green // Realignment of internal residential and agricultural access within Lodge Farm // Approved (No objections.)

UTT/21/3777/OP // Thremhall Priory Farm, Start Hill, Stane Street // Outline application with all matters reserved except access for the removal of existing dwelling and outbuildings and erection of residential development of up to 18 dwellings // Withdrawn (The Council strongly objects: The site is in the Countryside Protected Zone and development would be contrary to Local Plan 2005; an archaeological survey must be done as this is a historical site with listed buildings (policy ENV4); a noise survey should be conducted (24 hours for a period of time) because of its proximity to the airport (policy ENV10); the proposal notification is not accessible to the public at all times; the nature survey needs to be validated for marshland habitat (policy ENV8).)

UTT/22/0053/HHF // The Bungalow, Tilekiln Green // Install a dropped kerb to allow parking for vehicles // Refused (Sight lines must be clear.)

UTT/22/0434/OP // Land North of Stansted Airport // Outline application for demolition of existing structures and redevelopment of 61.86Ha to provide 195,100 sqm commercial / employment development predominantly within Class B8 with Classes E(g), B2 and supporting food retail/food/beverage/nursery uses within Classes E (a), E(b) and E(f) and associated access/highway works, substation, strategic landscaping and cycle route with matters of layout, scale, appearance and other landscaping reserved // Awaiting decision (Access to the north side needs improvement)

UTT/22/0389/HHF // Willow House, Tilekiln Green // Erection of single storey extension to rear of existing cartlodge to form office/gym // Approved (Must stay a cart lodge and not be redeveloped later.)

UTT/22/0624/HHF // Cherry Orchard, Church Road // Proposed two storey rear extension // Refused (No objections)

UTT/22/0687/HHF // Little Jenkins, Jenkins Lane // Construction of an in-ground swimming-pool (10 x 5 m) // Approved (No objections)

UTT/22/0741/HHF // 154 Bedlars Green, Bedlars Green // Proposed single storey side extension (amendments to previously approved application UTT/19/0632/HHF) // Approved (No objections)

UTT/22/0789/FUL // Normandale Farm, New Barn Lane // Demolition of existing house and erection of new house // Awaiting decision (Water flowing from site needs to be addressed)

UTT/22/0267/FUL // Land at Tilekiln Green, Start Hill // Creation of an open logistics facility with associated new access and ancillary office with amenity facilities // Awaiting decision. (The Council strongly objects: Current infrastructure could not support the increased traffic of 500 vehicle movements per day that this development would bring. The junction at Start Hill with the B1256, and its close proximity to the M11 roundabout (Junction 8), already sees much traffic build up from the roundabout

and back along Stane Street. This means drivers often divert through the village. The speed and weight of traffic means our roads and verges suffer much erosion and any increase would exacerbate the situation. It would also have a huge impact at the other end of the village at the junction of Church Road and the A1060 and, as travellers deviate their journeys, it will inevitably send more traffic past Howe Green House School (currently under concern because of speeding traffic issues), across Woodside Green and down New Barn Lane, again in an attempt to circumvent the traffic build up that would transpire should this application go ahead. Such an increase in traffic would be disastrous for all Great Hallingbury residents who currently risk their lives when out walking because of speeding traffic.

NOTE: UTT/1148/01/FUL Rivendell was refused due to possibly creating too much traffic through the village.

Residents local to the site would be suffer a dramatic increase in noise levels, especially at night with vehicle reversing alarms, doors banging, plus engine noise. Light pollution would be an intrusion. Has sufficient drainage been planned and where will surface water run?

It appears there would be no new employment created as it is only a change of location.

If this preposterous proposal is allowed to go ahead, a condition must be that all vehicles without exception from the site must not be allowed to turn right to go through the village. Sadly, this road is already a *rat-run* for commuters for the M11, A120 and Stansted Airport. Should this application go ahead it will irreversibly change the whole dynamic of Great Hallingbury as a village.

(Earlier in the meeting, members of the public had expressed concerns about this planning application as it seems nothing was changed in the application but the previous institutional objections are not being registered this time. There is a concern that something is going on in the background.)

Additional comment to those previously

continued on page 27

E GOOCH BUILDING

K.J.GOOCH PROPERTY MAINTENANCE

General Building & Repair, Interior & Exterior Decorating,
Kitchens, Bathrooms, Driveways, Garage Conversions,
Complete Renovations, Landscaping, Extensions,
Garden Structures, Oak Framed Buildings

Local Family Run Business For Over 40 Years!

Kevin: 07711419723 Elliott: 07746808557 Home: 01799586782



WWW.EGOOCHBUILDING.CO.UK

LTH Waste Removal and Luxury Toilet Hire (UK) Ltd



LTH (UK) Portable Toilets supplies and maintains building site toilets, with weekly / ad hoc servicing as required. Existing site toilets and welfare units can also be maintained for the duration of the building project.



LTH Waste Removal is your local service provider for liquid waste removal, including:

- Cesspits
- Septic tanks
- Klargesters and Bio disks



Whether you are arranging a wedding, private party or corporate event, let **Luxury Toilet Hire (UK) Ltd** provide you with the perfect toilet facility to make your occasion a memorable success.

Please visit www.luxurytoilethireltd.co.uk



Based near Great Hallingbury, we provide a personal, professional and efficient service at very competitive rates.

For a free quotation, please contact us:

Tel: 01279 504638 or 01371 873003 Yard: 01371 871871 Email: info@luxurytoilethire.co.uk

**Your call is very important to us ...
Please continue to hold ...**



VANS AUTOS



MOT TEST CENTRE
Class 4 and Class 7 vehicles
Service and Repairs

Opening Hours
Monday – Friday 8am – 5pm
Saturday - by appointment only

**Tel: 01279 724534
or 07778 217304**

continued from page 27

submitted: As the Customer Care and Social Value Manager for Sisk, who are the main contractors on the M11 Junction 8 (including A120 West) on behalf of Essex County Council, points out the Planning Departments should be aware that, *The area around Junction 8 of the M11 is increasingly congested and lacking capacity at peak times. Planned developments in the north of Bishop's Stortford and local growth planned in East Herts and Uttlesford will lead to an increasing amount of traffic using the junction in the years ahead as London Stansted Airport continues to grow.*)

UTT/22/0861/FUL // Start House, Tilekiln Green // Erection of two residential dwellings // Awaiting decision. (Objections: Original application, UTT/20/2710/FUL, was for one house and in-line with its host *Start House* to which the GHPC agreed. The UDC Planning Dept put strict conditions on their original approval to ensure safe road access/egress as it would be a dangerous vehicular site for development, so to allow a development of 3 properties with a minimum of 6 vehicles is erroneous; houses will be under the flight path of incoming and departing aircraft and Local Plan Policy ENV10 does not permit noise sensitive development; it is located on one of the worse road bends in Great Hallingbury and would invite more accidents on an already densely used and at times very dangerous road with no footpath; access is hindered by the supporting pillar of the Flitch Way bridge; walkers/cyclists park indiscriminately opposite to take exercise on the Flitch Way; lorries who miss signs for the low bridge often mount the verge outside this property to manoeuvre in reverse for up to 200m; overall congestion and hindrance for other users and therefore continuing to destroy our village; there are currently no amenities in Great Hallingbury for residents and no bus service through the village; too many units on a small plot right under a phone mast (not shown on drawings); surface water drainage is by soakaway which

often does not work and this would allow a flood onto the road in extreme conditions; drawings show the foul drainage running into the main drain with the flow direction incorrectly shown.)

UTT/22/0853/FUL // Land adjacent to Cobblestones, Church Road // one detached dwelling with associated private garden, car parking, new vehicular access, and landscaping // Refused (Objections: much larger application over two floors (compared to UTT/16/2170/FUL which was refused); infringes the light space afforded to properties of Glebe House and Cobblestones and is of an overbearing nature; will add another vehicle access to an already busy and at times speed inflicted road (Church Road); the site remains within the Great Hallingbury Conservation Area therefore not land to be built on)

UTT/22/0865/FUL // Land Adjacent to Willow Tree, Tilekiln Green // Proposed erection of one dwelling with associated access, parking and landscaping // Refused (Developments must be connected to the main sewage; construction of a footpath to connect Tilekiln Green to the B1256 should be considered so that pedestrians can safely access the amenities that are being quoted in the planning statements as currently there is no safe access to the Petrol Station or the Bus Stop for pedestrians.)

UTT/22/1013/FUL // Monkswood Bungalow, Woodside Green // Proposed replacement dwelling with associated operational development // Approved (No objections)
UTT/22/0950/FUL // Hockerill Sports Club, Beldams Lane // Proposed erection of three security lights on 4.4m poles // Refused (No objections as long as there is no light spillage to the neighbouring properties)

Applications Dealt with at Meeting

UTT/22/1001/FUL // Howletts, The Street // The erection of two detached five-bedroom houses together with garaging, an access drive and landscaping enhancement. (No objections other than it might be overdevelopment on a small quiet country lane)

UTT/22/1484/FUL // The Hay Patch, Woodside Green // Installation of manege arena lighting and low-level security lighting. Proposed storage building to house feed/hay, wc, and tack room. (No objections but lights should not impact on any housing and storage building should remain storage and not being converted into a house later.)

UTT/22/1485/LB // 89 Woodside Green // Replacement windows and door. (No objections.)

UTT/22/1528/FUL // Land Southeast of Great Hallingbury Manor, Tilekiln Green // Application to vary condition (approved plans) of planning application UTT/20/0336/DFO (added under UTT/22/1567/NMA) (No objections.)

UTT/22/1789/LB // Woodside Green Farm, Woodside Green // Repair and replacement of windows and doors with proposed secondary glazing. (No objections.)

Late Planning Matters

UTT/22/1021/FUL // Green Corners, New Barn Lane // Erection of one dwelling (revised scheme to UTT/20/1022/FUL). (No objections.)

UTT/22/1719/FUL // Land East of White Cottage, Start Hill // Full planning application for three dwelling houses including a three-bed detached house and a pair of three bed semi-detached houses including seven parking spaces, access and landscaping. (Objections: overdevelopment of small plot 875sqm that slopes away from the main road up to a rate of 2.42m; squeezing in three houses and associated parking means the manoeuvring space allowed is too tight; no objection to two properties with associated parking and private amenity space; properties can be further forward on the plot, allowing for parking and amenity space access down the side of each property; property design should be considerate to White Cottage)

Vandalism

The *Great Hallingbury* sign near the church had been painted over and the rangers would be asked to clean it? There had also been vandalism at Bedlars Green

The Poppy Appeal in the Hallingburys 2022



The Royal British Legion Poppy Appeal will take place this year in the Autumn as usual. For two weeks we will be reminded of the events which led to the Appeal and those who still benefit. With continuing conflicts throughout the world there is still a need for the support offered from the money raised.

During those weeks poppies will be available to purchase with a donation of your choice. There will be a few house-to-house collections as well as poppies available in shops and pubs.

In the past we have received great support from our local schools during the campaign and the children raise a high percentage of our local collections. Howe Green House School has regularly held a coffee morning for the Appeal and invited the local community to this event which is usually held on the last Friday of the campaign. The date for this year is yet to be finalised.

There will also be a coffee morning on Tuesday, October 25th, for those who wish to support the campaign within the Village. This will be hosted by Christine Coultrup at 10.30am and follows a very successful similar event last year. More detailed information on these events will be available nearer the time so please look out for posters and leaflets.

Last year we raised over £1,245 in the Hallingburys. Let's look forward to another successful campaign this year.

Gill Sewell, Appeal Co-ordinator for Great & Little Hallingbury





Great Hallingbury Village Hall

Ton Club

A monthly draw with cash prizes for just £12 a year to help the Village Hall Committee maintain the hall in good condition with competitive hire rates. Half of each month's membership fees are paid out as prizes which currently are:

1st prize £25 2nd prize £15
3rd prize £10

Results

May 2022

1st prize	no 51	Laura / Jaco Schoeman
2nd prize	no 21	Tracey Walker
3rd prize	no 44	Pauline Beaumont

June 2022

1st	no 54	Carole Travell/D Poole
2nd	no 76	Alan Pinnock
3rd	no 77	Tom Banister

July 2022

1st	no 29	Dan Stuebler
2nd	no 63	Lucie & Jack Brear
3rd	no 95	Nikki & Jay Griffin

Thank you for your Support



Great Hallingbury Village Hall

*Raising funds to
improve the Village Hall*



TWO QUIZ NIGHTS

Saturday

10th September

Saturday

3rd December

Great Hallingbury Village Hall

7 for 7.30 pm

GOOD PRIZES AND RAFFLE

£5 per person at the door - table of 6 or 8

Reservation essential from Sally (01279 658751)

Bring your own food and drink

Enjoy a convivial evening -

Support the Village Hall

DANIEL ROBINSON & SONS

Independent Family Funeral Directors & Monumental Masons



- A professional, caring, 24 hour service
- Arrangements in the comfort of your own home, if preferred
- Private Chapel of Rest
- Pre-payment Plans
- Fleet of air conditioned limousines & horse drawn funerals
- Free bereavement counselling

79/81 South Street
BISHOP'S STORTFORD
01279 655477

www.drobinson.co.uk

*Dedicated to serving our
local community*

Bullfields
SAWBRIDGEWORTH
01279 722476

Cammashall
Fruit Farm * Tea Barn * Farm Shop

Beer Festival

August Bank Holiday Weekend

Saturday 27th August 11am-8pm
Sunday 28th August 11am-5pm
Monday 29th August 11am-5pm

Six Local Breweries | Over 20 Real Ales | Over 2000 Pints!

Entry must be pre-booked online

LIVE MUSIC
Saturday 12.30pm-3.30pm: Old Skool Duo 5pm-7.30pm: Time Warp Band
Sunday 1pm-4pm: Repertoire Dogs
Monday 12.30pm-4pm: Elliot Porter

Book now! Limited tickets available. You MUST pre-book your table - one table seats up to six people
Visit our website for full details and to book at cammashall.co.uk
Needham Green, Hatfield Broad Oak, CM22 1JT

Great Hallingbury W.I.



May

May was our Annual General Meeting when we look back on the past year's events. Reports were given by our Secretary, Treasurer and President. It was so good to be back after last year's annual meeting which had to be held on zoom.

Our President, Carmela Claxton, was re-appointed and with existing and new committee members elected we have good support for the coming year.

Following refreshments we enjoyed a fun quiz with Jan Baldwin as the quiz master. It was good to know our little grey cells were back too.

June

In June the speaker was Mel Rees. Mel's travels have provided wonderful and amazing material for his six books - stories and episodes from everyday life and very amusing people. *My Family & Other Setbacks!* is a light-hearted look at life, children who won't leave home (and having done so, still cling onto your wallet) and parents who look set to outlive you.

We welcomed visitors from neighbouring WI's to this open meeting event.

Craft Group

We have a craft group now who enjoy meeting up socially each month to learn new crafts or complete existing projects.



Knitting and crochet are popular but any crafter is welcome to join the group.

Hallingbury Flower Show

What a delight to have The Hallingbury Flower Show back and the new location at Great Hallingbury Village Hall proved successful and well supported. Our members took part in several of the classes and were pleased and proud to be awarded prizes. In particular, Great Hallingbury WI won the cooperative class shown in previous column.

Carole Morris won the *People's Choice Cup* for her garden and Beverly Moore won the challenge cup for Flower Arranging and for Best in Show.



July

Following a successful Flower Show, it was enjoyable to sit back, relax and enjoy a flower arranging demonstration by our member Anne Bell.

Help Us Win Donations

Great Hallingbury Women's Institute needs your help! Sign up to easy fundraising and raise FREE donations every time you shop online with over 6,000 retailers. John Lewis, Argos, Uswitch, eBay and many more are waiting to give a free donation. Sign up to support us here - <https://www.easyfundraising.org.uk> THANKYOU.

Visitors are always welcome so why not follow us on Instagram, find us on Facebook or check out our website <http://www.greathallingburywi@weebly.com>

Beverly Moore



THE FORGOTTEN GARDENS OF EASTON LODGE

July started hot, hot, hot and we have been doing our best to keep key plants and veg watered but it is always a struggle as we have to rely on a single well and rain filled water butts. But the Gardens have been looking great, particularly the roses, despite being parched. We have regularly had a hummingbird hawkmoth and lots of bees supping from the lavender and the butterfly numbers have picked up a little.

Hopefully the plants will soon have been refreshed by rains but we will still have warm days for our visitors to enjoy a relaxed stroll, tea and homemade cakes. It is a lovely place to bring the children as they enjoy the space to roam, the treehouse and the elephant statue to remind us of the Countess's baby elephant, Kim. There is no entry fee for children up to the age of 16 and we also welcome dogs on leads.



Our 21 August Open Day should be fascinating as our Archivist is going to help us all understand more of the lives and legacy of the Maynards before Daisy, Countess of Warwick. The first Henry Maynard was given the 10,000 acre estate for his loyal work for William Cecil, Queen Elizabeth I's Spymaster in Chief.

Autumn Open Days

Apples and Bees Day - 25th September

Our seasonal apple and bees day is when we press apple juice and visitors can taste all

sorts of apple and orchard produce and see into the intricate world of bees.

October Open Day - 23rd October

Our last Sunday open day of the season and an opportunity to enjoy the pumpkins and dahlias and a relaxed stroll around the Gardens.

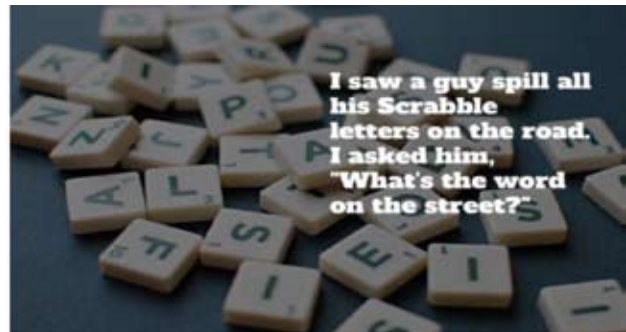


On both days there will also be a range of stalls, including a plant stall, a local wood turner, crafts and jams; and we will be joined by the Woodland Trust and Essex Wildlife Trust.

Our Daisy's team will provide our usual fayre of local bacon rolls, hummus or cheese rolls and homemade cakes. Tickets are available in advance through Trybooking or on the Gate after 12.00.

We are also open to visitors on Thursdays through to late November from 11am to 3pm, with refreshments and garden produce on sale.

Jill Goldsmith



Quiz Answers

Answers to questions on page 4

1. Kenneth Branagh
2. Mushroom
3. Bergerac
4. Dragon
5. Israel
6. Duracell
7. Benjamin Disraeli
8. Call for the Dead
9. Wilton's Music Hall
10. Muffin the Mule



Great Hallingbury History Society



Programme Autumn 2022

Essex History through Public House Signs

by Keith Lovell



Wednesday, 14th September



The Way We Were

1952 - 2022

by Jane Seward

Wednesday, 5th October

Annie Besant and the Matchgirls Strike

by Jef Page



Wednesday, 9th November

Meetings held in
Great Hallingbury Village Hall at 8pm

Entrance Fee Including Refreshments:

£2.00 for Members Membership £10 pa
£5.00 for Non-members

EVERYONE IS WELCOME

Essex County Council

County Cllr Susan Barker



Writing at the end of July, it has not rained for many days which has allowed Highways to get on with some much needed road works and resurfacing.

In Great Hallingbury repairs are being undertaken to prevent the flooding at the Howe Green end of Church Road, pothole repairs outside East Lodge and surface dressing to the B1256 Stane Street. I have had some complaints about the quality of this work which is being followed up.

The Local Highways panel has a long list of schemes which include in the village some advance warning signs for the low bridge at the Fitch Way. Lorries having to reverse and turn in this location have been churning up verges and causing considerable delays for other road users.

Things at Essex are as busy as ever. The new Junction 7a on the M11 opened on time and Harlow Library has been fully refurbished, so worth a visit if you are in there. All Essex libraries now have a literacy corner to help those who have fallen behind on skills.

The pressures of rising prices that are affecting us all impact Council services as well... social care visits, home to school transport, all need additional investment as do building and road works. No doubt there will also be pressure from higher than average wage increases.

Nevertheless I do have some grant money available and will consider applications from village organisations. Is the WI still after a new projector?

If there are any issues I can help with then please get in touch

*Susan Barker 01245 231250
cllr.susan.barker@essex.gov.uk*

The Queen's Jubilee with Cream Teas

St Giles' Church welcomed around 40 people on the afternoon of 3rd July for a celebration, albeit a little delayed, of the Platinum Jubilee of Her Majesty, Queen Elizabeth II.

It was a sunny day so people could sit outside to chat and enjoy one of Heather's Cream Teas.



The afternoon culminated in two blessings. Firstly, the Rev Canon David Herrick blessed the six heritage fruit trees which have been planted in the churchyard to mark the Platinum Jubilee. Funding for the purchase was from Uttlesford District Council and the trees will

be tended and nurtured by the Gardening Club who look after the churchyard.

The second blessing was of a new bench seat in memory of Jean Pallett and purchased with her legacy to St Giles'. Jean, who died last year, had lived in the village most of her life and was an active member of the Friendship Club. The seat will be positioned in the churchyard for the enjoyment of us all.

Jigsaw puzzles were on sale in the church, there was a raffle and a draw for a splendid hamper provided by Jan Baldwin. Although not planned as a fundraiser, the afternoon earned St Giles' £333.70. Thanks go to everyone who attended.



St Giles' Gardening Group



A long, hot summer. It is not natural. As I write this it is 37° in the shade - they say you reap what you sow and we have neglected the environment for too long.

That said, anyone can help, either in their own gardens or at projects like ours.

Despite the ferocious heat the churchyard has continued to mature. Since we started the project in 2019 the numbers of cowslips have doubled. The pyramid orchids have increased from a count of five to over fifty - and spread all over the churchyard. Bee orchids have also appeared in new areas. And the cottage garden flower beds around the church walls are both attractive and inviting to insect life.



The number of identified butterfly species has risen to eighteen with the addition of Orange Tips and the Large Skipper this year. In fact the number is almost certainly higher as we have had one sighting that is puzzling us - sadly no photo. Yet....!

Meanwhile the moths have also increased - most pleasingly the flower beds have been a favourite destination for the Humming Bird Hawk Moth, again new to us in 2022.



This summer has also seen large scale tree work following a Health and Safety audit last year. We are extremely grateful to Kate Fuller for bringing the work to a successful conclusion. Sadly there has been some unavoidable collateral damage. A cherry picker had to be used at various points and a regular visitor to the churchyard will be able to see where it has been. Large piles of wood chippings were also left and we

are slowly disposing of these. Anyone who would like to have any of these, please just give me a bell!

On the subject of trees, the heritage fruit trees donated by Uttlesford have been safely planted and dedicated for the Jubilee. They seem to have settled in well and we have just got a hose pipe to aid in the watering. It is funny what a big difference a small thing like a hose can make!

There has also been an unfortunate incident - one for which the hose would have been very handy. Earlier this summer the grass bins near the new grave area caught fire and the fire brigade was needed to put it out. The bins have been extensively damaged. How this happened remains a mystery. It is considered highly unlikely that the grass spontaneously combusted. On the other hand within the area of the fire was a metal water carrier which does resemble a large bin. We have noticed that people have been putting rubbish from graves - old plastic flowers and the like - inside it and the best guess is that someone, thinking it was a bin, put a cigarette butt in it...

This raises an important point that will have to be addressed in due course. As we understand it, plastic flowers, toys and the like are not meant to be placed on the graves. For a long time a blind eye has been turned to this but it is becoming a real problem. In particular we are now having to make time for rubbish collection and dumping, which is not really part of our brief, and some of our equipment has been damaged on wire from plastic flower arrangements.

It would be hugely helpful



continued at bottom of next column

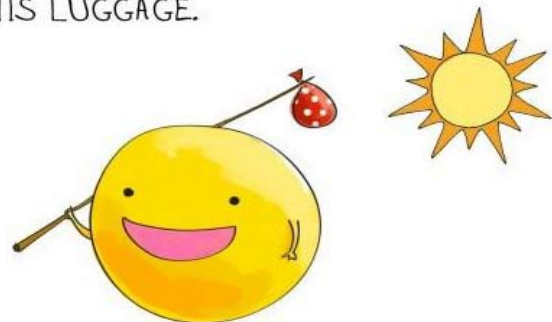
United Benefice Services

Services in the Six Villages

As the churches of the Six Villages (St Giles' Great Hallingbury, St Mary's Little Hallingbury, St Mary's Sheering, St Mary's Hatfield Broad Oak, St John's Bush End and Holy Trinity Hatfield Heath) move towards a United Benefice of six churches, the patterns for Sunday worship are undergoing review to create a sustainable worship rota going forwards.

We are, therefore, unable to publish the schedule of services for the next three months at this time. Please do check the Hallingbury Church website, www.hallingburychurches.co.uk to see where services are happening in each of the churches.

A PHOTON CHECKS INTO A HOTEL AND IS ASKED IF HE NEEDS ANY HELP WITH HIS LUGGAGE.



"NO, I'M TRAVELLING LIGHT."

continued from previous column

if anyone who tends a grave could help us out in this regard, particularly with the timely removal of old displays.

We are at the churchyard every Saturday from 10am, providing it isn't raining hard. The kettle is always on so stop by for a tour anytime!

For any enquiries please contact me on the usual number - 07756142890

Russell Robinson

GREAT HALLINGBURY SOCIAL EVENING



SAT 3rd SEPTEMBER
7-10pm(ish)

Village Hall

The Wren Kitchens saga has recently brought the local community together. We thought it would be a good idea to hold an informal social evening so we can all get to know each other a little better. Everyone is invited. This is an opportunity for everyone to come along and meet all those people in the village whose faces you may know but who you've never had the opportunity to talk to before.

Bring your own drinks and nibbles. Weather permitting we will gather outdoors, otherwise in the Hall.

Email : ghna@gmail.com for more information

Great Hallingbury Village Hall Committee

CHRISTMAS FLOWER ARRANGING Demonstration with Ann Bell



Friday, 25th
November 2022

1.30 for 2 pm

with afternoon tea and a
raffle in Great Hallingbury
Village Hall



Tickets £9.50

Contact Valerie Walker
01279 964140

Calendar

September 2022

- 3 St Giles' Church Coffee Morning 10.30 am - 12.30 pm
- 3 Great Hallingbury Neighbours Social Evening - Village Hall 7 pm - 10 pm
- 10 Library Van - Bedlars Green 3 - 3.30 pm
Woodside Green 3.40 - 4.10 pm
- 10 Great Hallingbury Village Hall - Quiz Night - 7 for 7.30 pm
- 12 Great Hallingbury Parish Council - Village Hall 8 pm
- 14 History Society - History through Essex Public House signs - Village Hall 8 pm
- 25 Easton Lodge Open Day - Apples & Bees - 11 am
- 28 Great Hallingbury WI - Tate and Lyle Sugar - Village Hall 7.30 pm

October 2022

- 1 Library Van - Bedlars Green 3 - 3.30 pm
Woodside Green 3.40 - 4.10 pm
- 1-2 St Giles' Tudor Weekend *see page 16/17*
- 5 History Society -The Way We Were 1952 - 2022 - Village Hall 8 pm
- 8 Village Litter Pick *see page 12*
- 22 Library Van - Bedlars Green 3 - 3.30 pm
Woodside Green 3.40 - 4.10 pm
- 23 Easton Lodge Open Day from 11 am
- 25 Poppy Coffee Morning 10.30 am
- 26 Great Hallingbury WI - Flog It - Village Hall 7.30 pm

November 2022

- 5 St Giles' Church Coffee Morning 10.30 am - 12.30 pm
- 7 Great Hallingbury Parish Council - Village Hall 8 pm
- 9 History Society -Annie Besant and the Match Girls Strike of 1889 - Village Hall 8 pm
- 12 Library Van - Bedlars Green 3 - 3.30 pm
Woodside Green 3.40 - 4.10 pm
- 23 Great Hallingbury WI - A Christmas Surprise! - Village Hall 7.30 pm
- 25 Flower Arranging Demonstration and Tea - Village Hall - 1.30 for 2 pm

December 2022

- 3 St Giles' Church Coffee Morning 10.30 am - 12.30 pm
- 3 Great Hallingbury Village Hall - Quiz Night - 7 for 7.30