

# Great Hallingbury Highlights

Winter 2024

Vol. 104

*An independent publication giving news on matters affecting Great Hallingbury*



Good wishes  
for the festive  
season to  
our readers,  
contributors,  
deliverers and  
advertisers

## Councillors

### Parish Council Chairman:

Mr. Alan Townsend Tel: 465790  
7 The Grove, CM22 7TT  
email: ajt1952@btinternet.com

### Parish Council Vice-Chairman:

Mr. Andrew Noble Tel: 832837  
Lewismead, Tilekiln Green, CM22 7TQ  
email: agnoble@aol.com

### Parish Councillors:

Mr. David Barlow Tel: 657182  
128, Bedlars Green, CM22 7TL

Mr. Mark Coletta  
email: cllrcolettapc@gmail.com

Mr. Mark Bloomfield Tel: 501679  
The Old Post Office, Bedlars Green, CM22 7TP  
email: bloomfieldmotors30@yahoo.co.uk

Dr Neil Jackson Tel: 654983  
Monksway, Woodside Green, CM22 7UU  
email: njackson57@btinternet.com 07801 431645

Mr. Alan Pinnock  
128A Bedlars Green, CM22 7TL Tel: 659071  
alanpinnock@hotmail.com Mobile: 07939 603507

Mrs Val Waring Tel: 07979 450871  
email: val@valwaring.co.uk

### Clerk to the Parish Council:

Mrs. Urška Sydee Tel: 07432 297142  
48 The Forest, Hatfield Broad Oak, CM22 7BT  
email: greathallingburypc@outlook.com

### Website:

<https://e-voice.org.uk/great-hallingbury-parish-council>

### Uttlesford District Councillors

Mr. Geof Driscoll  
email: cllrdriscoll@uttlesford.gov.uk

Mr. Neil Reeve  
email: cllrreeve@uttlesford.gov.uk

### Essex County Councillor

Mrs. Susan Barker Tel: 01245 231250  
Little Garnetts, Bishops Green, Barnston, Essex,  
CM6 1NF Fax 01245 231810  
email: cllr.susan.barker@essex.gov.uk

### Member of Parliament

Mr Chris Vince MP  
House of Commons, London SW1A 0AA  
email: chris.vince.mp@parliament.uk

## Contacts for Village Activities

### Bridge on Sundays

Organiser Christine Coultrup  
bridgeonsunday@gmail.com 01279 655144

### Cricket Club

Keith Behagg 01371 872550

### Hallingbury Ladies

Secretary Gill Sewell 01279 504990  
marjorierosegs@hotmail.com

### History Society

Secretary; Claire Layer  
gthallhistory@gmail.com 07776 936721

### Neighbourhood Watch

Coordinator Mark Coletta  
cllrcolettapc@gmail.com

### Neighbours' Association

Secretary Val Waring 07979 450871  
greathallingburyna@gmail.com

### Poppy Appeal

Coordinator Gill Sewell 01279 504990  
marjorierosegs@hotmail.com

### St. Giles' Church

Priest in Charge: Rev'd Sophie Weller  
Benefine Administrator: Alison Uncle  
administrator@thesixvillages.org 07934 260978

### Scouting Associations

Sally Bentley 01279 902710

### Village Hall

Bookings: Sarah Cox 07544 921459  
gthallvillagehall@gmail.com

**Venture 85** - short term loan of mobility aids, etc  
Monica Swann 01279 653820



# Editorial

## Should we change the clocks twice a year?



The other day I came across a diary for 1945 and was intrigued to find a whole schedule of Lighting-Up times for most of the major cities in the country. It must certainly have been more important then as cars did not have sensors to automatically turn on their lights as many do nowadays. In any event, there were far more bicycles than cars. And it was wartime with blackouts - but lighting-up time was obviously still critical information for many people. It was presumably a regulation that was often enforced.

We have just turned back our clocks to GMT. The concept of British Summer Time is to maximise the use of daylight hours later in the day and was first introduced in 1916. During WW2, the country operated on summer time and double summer time but things returned to GMT and BST afterwards.

There was a short period between 1968 and 1971 when we lived on British Summer Time all year round but this was discontinued as it was impossible to assess the advantages and disadvantages. The variation between north and south would be marked. If we were on BST permanently, it would mean that sunrise in London would move from the current 8.06 am to 9.06 and in Edinburgh

the sun would not rise until 9.44 instead of 8.44 am. But, of course, evening would be an hour later.

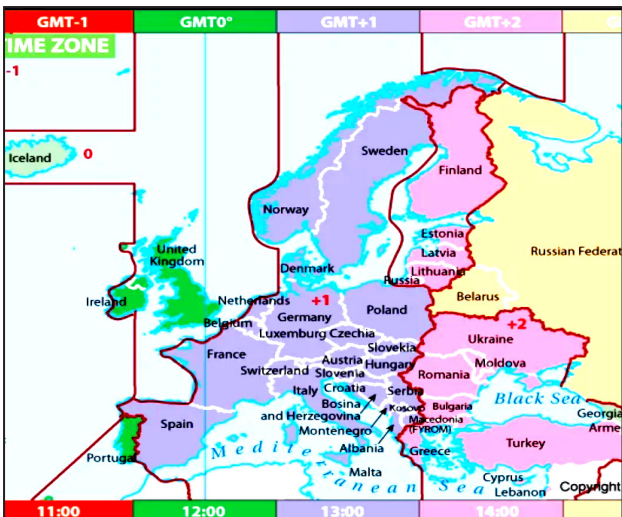
Logic would dictate that because the prime meridian lies through our country we should be on Greenwich Mean Time but a glance at the European Time Zone map shows that many countries have made a choice as the border line between time zones is rather zig zag.

Your choice may depend on whether you are a lark or an owl or the work you do. It will be impossible to satisfy everyone.

*Editor*

### CONTENTS

- 2 - Details of Councillors and Village Contacts
- 3 - Editorial
- 4 - Citizens Advice
- 5 - Essex County Council
- 6 - Cricket Club
- 7 - Book Corner
- 9 - Chairman's Report
- 11-14 - Neighbourhood Plan
- 15 - Hidden History
- 17 - History Society
- 18-19 - Great Hallingbury Village Events
- 20-21 - Hallingbury Ladies
- 22 - Easy Eating
- 23-25 - Parish Council
- 27-28 - District News
- 29 - Easton Lodge
- History Society Programme
- 30 - Pantomime News
- Charity Craft Sale
- 31-32 - Hallingbury Place in Local Press
- 33 - Poppy Appeal 2024
- Christmas Quiz Night
- 34 - Hundred Parishes
- 35 - Church Services in the Hallingburys
- St Clare Hospice
- 36 - Christmas Tree Lights SwitchOn
- Calendar



## Citizens Advice

citizens  
advice

### Benefits Changes

**Managed Migration** is the process by which people are being moved from legacy benefits across to Universal Credit. From the beginning of November, people who are currently claiming Employment Support Allowance (ESA) will start to receive migration notices, all of which are expected to be sent by the end of December 2025.

You may be entitled to less money on Universal Credit than previously. In such a case, there'll be transitional protection so you are not financially worse off. To receive this protection, it is vital that you wait until you receive a migration notice and claim by the deadline date on your letter. If you are at all worried about these changes, please get in touch or contact the Citizens Advice Help to Claim service on 0800 144 8 444 <https://www.citizensadvice.org.uk/benefits/universal-credit/before-you-apply/moving-to-universal-credit-from-other-benefits/>

### Electricity Costs

**Switching is Back!** Over 80% of households are now on standard energy tariffs with prices dictated by the energy price cap. After a 10% rise on 1st October, the cap is predicted to rise substantially again this winter and then stay around that level in January, when the next quarterly change takes place.

With competition slowly returning and fixes and other energy deals available to those willing to switch, it's possible to forestall upcoming increases by shopping around now for the best deals, so don't miss out!

### Share the Warmth 2024

More than 4,000 people in Uttlesford are already living in fuel poverty and there has been a rapid rise in the number of people coming to us for help and advice relating to utility bills over the last few years. With recent changes to eligibility for Winter Fuel Payment and the rise in the Energy Price

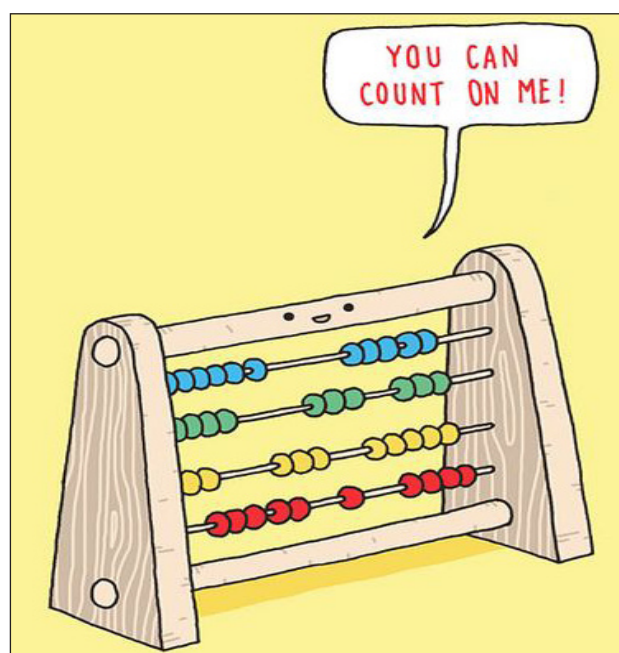
Cap, we are concerned that even more people will struggle to heat their homes this winter, so we have re-launched our Crowdfunder Campaign, *Share the Warmth Fund for 2024*.

Money donated to this fund will be ring-fenced and used to provide emergency support for local people who cannot afford to top up their meters, pay their utility bills or fill their oil tank, so they aren't forced to make the impossible choice between heating and eating. Our previous campaign raised over £5,200 and supported 109 people over 10 months. With an even more challenging situation this year we would love to smash our previous total! So please give what you can - every little helps, as they say! <https://www.crowdfunder.co.uk/p/uttlesford-citizens-advice-bureau-1078222>

### Contact Us for Help and Advice

Our specialists can offer help and advice on switching power providers and a whole range of other issues including benefits advice, checking eligibility for Pension Credit and Winter Fuel Payments, fuel vouchers, debt advice, home improvement grants and energy efficient behaviours.

Uttlesford Citizens Advice  
Barnards Yard, Saffron Walden, CB11 4EB  
01799 618840 [help@uttlesfordca.org.uk](mailto:help@uttlesfordca.org.uk)  
[www.uttlesfordca.org.uk](http://www.uttlesfordca.org.uk)



## Essex County Council

*Cllr Susan Barker*



Dear Great Hallingbury Residents

I am writing this in mid October when we are having a few brighter days. The clocks going back and the budget will be behind us when you are reading this. October has been busy with a number of key meetings.

### **Essex Pension Fund**

The Pension Fund at Essex goes from strength to strength with strong returns ensuring that we have the funds we need to pay current and future pensioners (184,000 of them). At an all time high of over £11.3bn, we are using some of our funds to make *impact* investments. These are investments that have a demonstrable environmental or social impact while still delivering a financial return. The fund recently won Local Authority Pension Fund of the Year ( assets over £2.5bn).

### **Great Ouse Authority**

The Great Ouse Authority, where I am a member ( Saffron Walden & Stansted are both in the Great Ouse catchment), is always an interesting gathering and brings home just how low lying parts of East Anglia are and the enormous amount of infrastructure that needs to be maintained to keep the towns and villages safe. One presentation this month focussed on heavy rain in parts of Bedford in late September where the Flitwick rain gauge measured 148mm (almost 6”) of rain falling in 24 hours and a further 47mm+ over the next few days onto the already saturated ground.

### **Stansted Airport Community Fund**

As a new member, I attended my first meeting in September where funds were allocated to a number of causes. I am also visiting a number of organisations who have applied for *Flagship* funding, where £50k

or two grants of £25k will be awarded in December.

### **County Council Debates**

Debates at Council in October were around the impacts of the removal of Winter Fuel allowance and the new housing targets set by Government. Uttlesford’s numbers have only increased by 11% but increases in other parts of Essex are far higher, with Maldon being set a target of a 97% increase, from 276 a year to 544!

### **Great Hallingbury**

On a more local level I have managed to get a number of road repairs done in the Parish but the job is never ending so, if there are issues you are aware of..potholes / street Lights / signs that need attention, please do let me know with a precise location (preferably what 3 words) and a photo.

I would like to take this opportunity to wish you all a Happy Christmas and a Peaceful New Year.

If there are any issues with which I can help, please do get in touch.

*Susan Barker*

01245 231250 [Cllr.susan.barker@essex.gov.uk](mailto:Cllr.susan.barker@essex.gov.uk)

Amici Cantate together with Bishops Stortford Sinfonia Present

# MOZART . REQUIEM

*and other Mozart masterpieces*

Natasha Page (Soprano)  
Olivia Scott (Mezzo)  
Gareth Dafydd Morris (Tenor)  
Jimmy Holliday (Bass)

Musical Director James Davey  
Concertmaster Tanya Barringer




Sat 30 November 2024 7.00pm  
Bishops Stortford Methodist Church  
CM23 3AZ  
Tickets Adults £18 (£22 on the door)  
Under 18's £10  
Tickets phone 07885796152  
[ticketsource/amici cantate](https://ticketsource/amici-cantate)

Amici Cantate  
SINFONIA

Amici Cantate Registered charity 1149824

## Little Hallingbury Cricket Club



### *Exciting Game*

The Sunday team finished the season well winning matches against Eastons, Little Hadham, North Weald, Ware, Acme, Hatfield Broad Oak and Manuden. Our only defeats were against strong teams from Stocking Pelham and Hatfield Heath.

The most entertaining match was against Acme, a touring side of actors from London. Batting first, the visitors scored 193 in 33 overs with youngster Hugo Juggurnauth and Aarush amongst the wickets. The highlight of the Acme innings must be the catch by Sam B-C. Fielding on the long off boundary he ran 30 yards to his left before diving to catch the ball just as it was about to hit the ground. It really was a fantastic catch. I have not seen one better at Gaston Green. Sam was still not finished. Chasing 193 to win, captain Phil Rowley opened with a solid 53. Sam, coming in at number 6, kept the scoring going and needed 10 off the last over to win. With a straight 6 of the final ball of the game, Sam achieved victory and also reached 105 not out, his first century for the club.

### *BBQ and Awards Presentation*

The weather was kind to us for the end of season awards which saw 50 club members enjoy BBQ cooked by Stewart!

Winners of awards were:

Most Runs - Stewart Gould

Most Wickets - Rishab Dixit

Club Member of Year - Nichola B- C

Young Player - Hugo Juggurnauth

Most Improved Young Player - Darcy Hunt

Junior Cricketer of the Year - jointly Albert

Latham and Veer Kalyankar

Most Improved Junior - Joshua Allum

Jack Petchey Award - Veer Kapil

### *Colts winter training*

We have entered under 11 and under 13 teams in the indoor league at HECC this autumn and will start indoor training at

Leventhorpe in the new year. A few of our colts have also been selected for the West Essex District coaching.

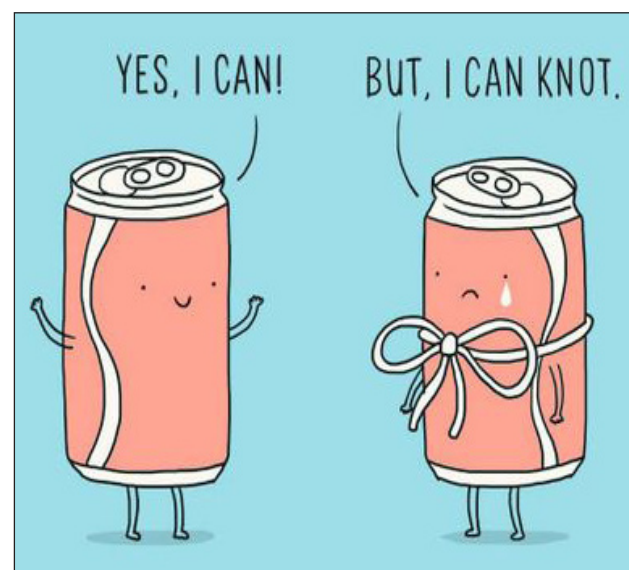
### *Next Season*

The late summer months saw our Saturday side lose more games than they won. A combination of key players being unavailable and the strength of the Premier League saw us hit a losing streak that ultimately ended in relegation. A key match against fellow strugglers Willingale was cancelled due to the weather and we went into the final match of the season needing to beat Abridge and hoping that Bengo would lose for us to stay up. We managed our end of the bargain - but Bengo also won, so we will play 2025 in Division 1 of the Herts and Essex Border League.

There were some strong signs for the next season with League debuts from Beau McArdle and Hugo Juggurnauth who both bowled superbly and have bright futures with the club. Once again the team was well marshalled by Stuart Dobson who maintained a strong team spirit despite the adverse results. We are optimistic that we will thrive in Division 1 and push for a return to the Premier League next year.

*Keith Behagg*

**Congratulations to the players from Great Hallingbury and to all the award winners.**



## Book Corner



## Book Corner

### *Gabriel's Moon*

by William Boyd

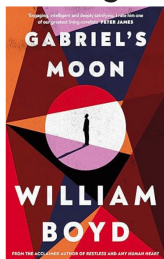
A spy story with a difference - no spills and thrills or Martinis *shaken, not stirred* - but definitely an attractive and mysterious woman who draws the hero into a world of espionage.

The story begins in 1936. Gabriel Dax is six years old and can't go to sleep until his mother lights a candle in a glass *moon-globe*. This night, though, he wakes up to the smell of smoke to find his mother dead and the house going up in flames. He manages to escape but is still having nightmares about that night many years later.

Gabriel is now a writer of newspaper travel articles and has had success with a book about dictators. He now plans an article on the two capital cities of the newly independent republic of Congo.

On arrival in Congo he was met by an old friend who suggested that Gabriel should interview the Prime Minister, Patrice Lumumba. Lumumba wanted to talk - and be reassured that everything he spoke about would be recorded and appear in a foreign newspaper. During the interview, Lumumba says that the British, the Americans and the Belgians want to kill him and he gives Gabriel three names to remember.

Returning home, Gabriel's editor at first seems very excited about the article. but the article does not appear in the paper. He is informed that Lumumba has been stripped of office so there is no point in his article being published. But not long after, a stranger (that *attractive and mysterious*



woman) tells him that Lumumba has, in fact, been killed.

And, before long, poor Gabriel is being lured into becoming *her spy* - unable to resist her demands!

### *Attention All Shipping*

*A Journey Round the Shipping Forecast*  
by Charlie Connelly

I bought another mug recently and, as I already have plenty of mugs, it seemed an unnecessary purchase. But why did I buy it? Because it shows all the shipping areas around the British Isles and I have always been fascinated by the Shipping Forecast - all those strange names and facts and figures about the weather at sea in the 31 *areas* around the country. Some time ago, I found a copy of this book (written 20 years ago) and, thanks to Charlie Connelly, I now know a lot more about the names of the places and where they are geographically.

Having lived in or near Greenwich for most of his life, he was already familiar with one of the areas: Thames. One day, sitting in his favourite pub near the river, he made the, somewhat odd, decision that he would make a journey around the country and try to visit each area of the Shipping Forecast. I suspect that there were quite a few occasions later when he must have wondered whether he was entirely sober at the time!

The book is a detailed and, at times, very funny account of his travels - which he allowed himself one year to complete. Some of his experiences were less enjoyable than others: notably Viking, North Utsire, South Utsire - but even these are described in such a way that you feel you are there with him. It is an excellent read for the *armchair traveller* as, once you have read the early chapters up to when he sets off, you can just keep it on the shelf and dip into it at random.

And then, all you have to do is wait for a round at a Quiz on the *Shipping Forecast* and astound everyone with your knowledge!

Jan Baldwin



## LTH Waste Removal and Luxury Toilet Hire (UK) Ltd



**LTH (UK) Portable Toilets** supplies and maintains building site toilets, with weekly / ad hoc servicing as required. Existing site toilets and welfare units can also be maintained for the duration of the building project.



**LTH Waste Removal** is your local service provider for liquid waste removal, including :

- Cesspits
- Septic tanks
- Klargesters and Bio disks



Whether you are arranging a wedding, private party or corporate event, let **Luxury Toilet Hire (UK) Ltd** provide you with the perfect toilet facility to make your occasion a memorable success. Please visit [www.luxurytoilethire.co.uk](http://www.luxurytoilethire.co.uk)



Based near Great Hallingbury, we provide a personal, professional and efficient service at very competitive rates.

For a free quotation, please contact us:

Tel: 01279 504638 or 01371 873003 Yard: 01371 871871 Email: [info@luxurytoilethire.co.uk](mailto:info@luxurytoilethire.co.uk)

## THE SCRAP MAN

Free Metal Collection

Garage Clearance

Electrical/Electronic Items

Cables

Phone: 07792 395470

## ART FOR WELLNESS

Join us for mindful and relaxing creativity at The Arthouse Oasis in Great Hallingbury

Art Sessions  
Art Workshops

Private 121's

Perfect for those who don't flourish in a group environment

Party Events

In-house & remote



Book via the website  
Great Hallingbury  
Mob: 07788 577448  
Email: [info@theartthouseoasis.com](mailto:info@theartthouseoasis.com)  
[www.theartthouseoasis.com](http://www.theartthouseoasis.com)

**Cammas Hall**  
Fruit Farm • Tea Room • Farm Shop

## SEASONED HARDWOOD LOGS

SMALL BAGS (APPROX. 25KG) FOR £8.00 OR METRE-CUBED BAGS (APPROX. 600KG) FOR  
£130.00

YOU CAN COLLECT A MINIMUM OF THREE SMALL BAGS FROM US FROM THE MAIN OFFICE ABOUT HALF A MILE FROM THE FRUIT FARM. PLEASE RING AHEAD TO ARRANGE COLLECTION. WE WILL DELIVER FREE OF CHARGE WITHIN THREE MILES OF THE FARM, UP TO FOUR MILES FOR A £5 CHARGE OR UP TO FIVE MILES FOR A £10 CHARGE. THERE IS A MINIMUM ORDER OF 10 SMALL BAGS FOR DELIVERY

FOR FURTHER INFORMATION OR TO PLACE AN ORDER  
PLEASE EMAIL [OFFICE@CAMMASHALL.CO.UK](mailto:OFFICE@CAMMASHALL.CO.UK) OR  
CALL 01279 718570 CAMMAS HALL FARM,  
NEEDHAM GREEN, HATFIELD BROAD OAK, CM22 7JT



## Parish Council Chairman



### **Questionnaire**

As I sit and write this message to you, I am somewhat amazed by the lack of response to the questionnaire on *The Future of your Village* which you received with the last issue of *Great Hallingbury Highlights*. Less than 10% of you responded, which is a great shame. The Parish Council wanted to give everybody the chance to have their say. Thank you to those who did respond.

### **Uttlesford Local Plan**

The Regulation 19 consultation for the new District Plan has been finalised and now put forward to the Government for approval. As previously stated, this means 1,400 new houses are to be built on our doorstep in Takeley. Your Parish Council objected to these plans and made our views known at the planning meeting held at Uttlesford. I would point out that both our District Councillors voted for this Plan.

### **Heating Bills**

Since the new government came into office they have taken away pensioners' heating allowance. If you feel that you cannot afford to pay your heating bills because of this, please ask about what you are entitled to. The best place to start would be Citizens Advice at Saffron Walden (01799 618858) or you can ask the District Council for their advice (01799 510510)

### **Community Website**

As you saw on the front cover of the last issue of *Highlights*, there is now a new Community Website up and running. It is run and maintained by Cllr Val Waring and you will note that there is frequent updating. If you want to add anything to this site, contact the webmaster. A big well done and thank you to Christine and Val for all their hard work on the set up of this project.

### **Christmas Lights Switch On**

On Saturday, 30<sup>th</sup> November, the Parish Council will be hosting the **Village Christmas Lights** celebrations at 6.30pm. Do please come along and join us for this festive event. There will be mulled wine, mince pies and sausage rolls and you are welcome to stay into the evening. My thanks to Lee Cox for organising the Village Hall and to Alan Pinnock for supplying the Christmas Tree. Thanks also to Urška, our Clerk, for organising the festive fare. There is no charge for this event. I look forward to seeing you there. I have also invited our M.P., Chris Vince, to come along, giving us all a chance to meet him.

### **Pot Holes and Overgrown Paths**

We have had a lot of pot holes repaired but there are still more to be done. Hopefully, by the time you read this, many of them may be fixed. Also the hedges overgrowing the footpath along the B1256 have now been cut back. This makes life a little safer for anybody walking these paths. I would like to thank County Councillor Susan Barker for all her efforts in getting this work done.

### **SpeedWatch**

We still do not have enough members of the Speed Watch Group, so we are looking for more volunteers.

### **Litter Pick**

Cllr Mark Bloomfield organised another Litter Pick on Sunday 13<sup>th</sup> October. Well done to Mark and all the people who turned out to help him on the day. A great effort.

I would like to thank my fellow Councillors for all their hard work over this last year; also Christine Coultrup for her brilliant efforts on *Great Hallingbury Highlights* and, of course, our Parish Clerk, Urška, for all the work she does and for keeping us all in place.

Finally, I would like to wish you all a very Merry Christmas and a Happy New Year.

*Alan Townsend, Chairman,  
Great Hallingbury Parish Council.*

# The Physiotherapist

JULIE HERBERT MCSP BSc (Hons) MAACP

Associate NATALIE HILLIARD MCSP BSc (Hons).

The Street Barn Clinic, The Street, Great Hallingbury, CM22 7QR

**Tel: 01279 826527 / Text: 07712 230391**

**enquiries@thephysiotherapist.net**

Relocated from The Folly, 18 Hadham Road, Bishop's Stortford

**Treatment for all your joint and muscle pain from head to foot**  
**Treatment for any neurological conditions, including Parkinson's, Stroke, MS, ME and Long Covid**

SPORTS INJURIES RSI • HEADACHES • KNEES • BACK PAIN  
 NECK PAIN • TENNIS ELBOW • PRE & POST OPERATIVE REHAB  
 SHOULDER PAIN • ARTHRITIS etc.

Daytime or evening and Saturday morning appointments available.

**www.thephysiotherapist.net**

## Town & Country



### Sweeps

Chimney Services

**CLEAN CHIMNEYS ARE SAFER CHIMNEYS**

- Chimney Sweeping
- Stove Servicing
- Nest Removal
- CCTV Inspections
- Bird Guard & Cowl Fitting
- and much more

**07703 740638**

[www.townandcountrysweeps.com](http://www.townandcountrysweeps.com)



## VANS AUTOS



**MOT TEST CENTRE**

**Class 4 and Class 7 vehicles**

**Service and Repairs**

**Opening Hours**

**Monday – Friday 8am – 5pm**

**Saturday - by appointment only**

**Tel: 01279 724534**

**or 07778 217304**

# Great Hallingbury Neighbourhood Plan

## *Cllr Waring's Analysis and Comments*

This questionnaire was sent in August to everyone who gets a copy of *Great Hallingbury Highlights*. In addition, it was advertised on the Great and Little Hallingbury Facebook page and was on the new community website.

Out of over 370, we have had a response from less than 10% of households with 34 replies. The upshot is that, having analysed the responses, these will be presented to the next Parish Council meeting which will be held in November and a decision will be made by the Councillors whether to go ahead with the plan or not.

Having a Neighbourhood Plan would afford us some protection as it sits below the Local Plan, thus Planning Committees MUST take into account the concepts in the Neighbourhood Plan when deciding planning applications. However, it will take hours of work and that work should be initially undertaken by a Steering Committee, with the wishes of the village being taken into account.

The most salient points from the questionnaires are outlined below, along with some comments. The outline figures from each area below can be found at the end of this document.

### ***Speeding and Calming Measures***

98% of responses said speeding was a real concern and 90% felt 30mph would be preferable throughout the village. When it came to what to do about speeding, speed humps, width restrictors and/or speed camera/variable speed camera/vehicle activated speed signs (smiley face etc) were the most popular suggestions.

Unfortunately, we cannot have speed humps as the Highways Regulation states that



when a speed bump is in place THEY MUST BE LIT BY STREET LIGHTING. Likewise, width restrictors would prevent the farm vehicles accessing the road, so is not a viable option.

With regards to speed cameras, a survey shows that between 2018-2022 councils spent £3.2m on speed camera maintenance. This obviously does not cover the cost of actually putting it in and costs would have to be outweighed against income received from fines. So, it is highly unlikely.

However, it is not all doom and gloom. We could ask Essex County Council for updated vehicle activated speed signs (obviously no guarantees) but we would have to show constant speeding throughout the village. We did set up a Speed Watch group in 2022. Currently, there are just 3 people who regularly go out. Whilst we appreciate that some are unable to help for a variety of reasons, it does all start with us, as a village, wanting to help ourselves. If we could get 16 people to regularly take part, we could have some sort of rota system whereby we could police three sites on a weekly basis or even twice weekly with each person doing one session every two weeks, 4 people each time, three locations each time (not more than 30 mins at each location). Then we would have much more data to support our arguments.

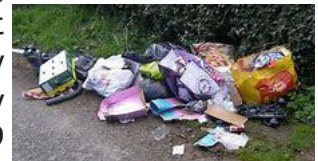
### ***Future Residential Development***

Without doubt, the overwhelming view was no more housing developments at all except, perhaps, gap housing (building primarily single houses between existing houses).

### ***Specific Concerns***

The five top concerns were flytipping (14), thefts including cars (13), drug dealing (12), speeding (7), dog fouling (6), litter throughout village (3).

It is possible to report fly tipping directly to UDC, either by calling them on 01799 501501 or online using the link *Fly-tipping - Uttlesford District Council*.



There are two annual litter picks on a Sunday in March and October in which all residents are invited to participate.

### **What People Want for the Village**

**SHOP:** Overwhelmingly, the responses want a shop but the question is where? Could a pop up shop work if there was a suitable venue? If so, would we have enough volunteers? Again, it goes down to us helping ourselves. If we could find a location, we would need volunteers to help run and stock it.



**Pub:** The site of The Hop Poles currently has a planning application to change the use to residential. This effectively means that any new pub could not be on that site so, as with the shop, the question is where?



**Social Events:** The Village Hall Committee is doing what it can to encourage social evenings, which have been taking place

since 2023, with plans for one event most months in 2025. Amongst the comments we received on the questionnaire was, *Without a pub, very few people will attend social events.* This is simply not true; the social evenings are well attended though, of course, there is always room for more people. If you have not yet been, why not try it, you may be pleasantly surprised!

**Pot Holes:** The bane of everyone's life. Essex Councillor Susan Barker now has access to a workforce on a rotation basis. Obviously her area is far reaching but we should continue to assiduously report potholes on the Essex County Council interactive map; the more reports, the greater chance we have of getting at least some of them filled. Not an ideal solution, we know, but it is the best we have. You can report them online at *Tell us - Essex County Council (essexhighways.org)*.



**Traffic:** These issues are always going to be the source of some concern but it is simply not possible to close one end of the village and only allow residential traffic in, not least

because the Village Hall and car park is the designated meeting point for emergency vehicles in the event of a major incident (for instance at the airport).

There is already a weight restriction in the main village and the height of the bridge at Fritch Way precludes the largest of vehicles entering at Tile Kiln Green.

**Footpaths:** It would be lovely to have footpaths throughout the village, we can all agree on that. However, for the most part there is no means to widen the roads and certainly through the main village ditches on one side and private property driveways prohibit this happening. Alongside this, there is an ongoing issue of vegetation and it being anything from overgrown to out of control. Suggestions were made of having a summer rota to trim but that comes with a whole array of health and safety issues. Who would take responsibility, who checks the safety of the machines used and so the list goes on.

**Night Flights:** This is something out of our control but details of a consultation



have been in recent editions of *Great Hallingbury Highlights* and on social media which provided details of how you could have your say on proposed night flight restrictions being lifted in 2025.

**Farm Spraying:** Another thing mentioned was advance notice of farmers spraying and what was being used. We can certainly ask but, due to the time they know and publication of this magazine, this is only likely to go up on social media and the website. (There was something earlier this year about dates on the Facebook page but not what was being used.)

**More Integration of Villagers:** More volunteers and more opportunities to socialise were all raised. You simply cannot make villagers integrate, all you can do is provide the conduit for them to meet up. The various committees in the village do all they can. We have three quiz nights per year, we have ten or more social events and we are looking at a pop up café for 2025.

The more people that want to take the opportunity to come along and get involved, be it as a participant or a volunteer, the better. There is an article in this copy of *Great Hallingbury Highlights* that provides dates in the diary already for 2025, so there is plenty of time to add them to your social calendar, details will be out on noticeboards, on the community website and on social media. Just keep checking.

Don't forget the clubs that meet in the Village Hall - Hallingbury Ladies (formerly WI), History Society, Bridge Club, drama classes for children, Craft Club.

### Amenities for Children and Young Adults



The most offered option was a playground, some felt at the Village Hall, others at the Mead Fields development. The

Parish Council has previously investigated such a scheme. However the cost to build a playground in the UK can range anywhere from around £5,000 to upwards of £100,000, with factors like the type of playground, the size of the project and the complexity of the build influencing the overall spend. Local authorities are no longer actively providing grants for play areas, not least because of the spiralling costs of building and maintaining them. There are also issues around health and safety as well as insurance. Walking through a village without a pavement may

cause a safety issue for the children wanting to use the facility and there is little parking as the car park remains locked for security reasons when the Hall is not in use. That said, the Village Hall playing field can be used by anyone as long as the venue is not hired out.

### What Can Be Done

All in all, there are some things that the questionnaires threw up that can be accommodated, others simply not. Several compromises can be made - especially the social events. Who knows, they may become so popular they can be increased either in frequency or their nature. We could incorporate a fish and chip or pie and mash supper; or maybe someone knows a local musician who might come along. The social aspect of the village can be whatever the residents want it to be with the facilities we have.

We hope that the links provided above may be of some use. Members of the public are always welcome at Parish Council meetings. See the community website or the Parish Council website for more information.

The village hall is always open to offers of help for various events. if you have a burning desire for an event you want to see put on, then please feel free to contact one of the village hall committee members (see community website for more details)

<b>What Is Important In The Village</b>					
	<b>Definitely</b>	<b>Yes</b>	<b>Neither</b>	<b>No</b>	<b>Do Not Use</b>
Retention of CPZ/Conservation area	25 (74%)	9 (26%)	0 (0%)	0 (0%)	N/A
Support for Farm storage to small businesses	7 (20%)	12 (36%)	7 (20%)	8 (24%)	N/A
Continued protection of wildlife	25 (74%)	8 (24%)	1 (2%)	0 (0%)	N/A
Preservation of footpaths/pavement	27 (80%)	7 (20%)	0 (0%)	0 (0%)	N/A
Is speeding a concern	21 (62%)	12 (36%)	0 (0%)	1 (2%)	N/A
30mph throughout village	19 (56%)	11 (34%)	3 (8%)	1(2%)	N/A
Is bus service sufficient	N/A	5 (16%)	7 (20%)	7 (20%)	15 (44%)
More social housing in future developments	7 (20%)	8 (24%)	7 (20%)	12 (36%)	N/A

<b>Occupants In Houses</b>						
No of Occupants	1	2	3	4	5	6
No of houses	6	10	6	8	2	2

<b>Time In Village</b>				
No of years in village	0-6 years	7-14 years	15-25 years	26+ years
No of houses	4	6	3	21

<b>Likely To Be Here In 5 Years</b>			
	Yes	No	Unsure
No of houses	25	5	4

<b>What People Want for the Village</b>			
What	Number	What	Number
Shop/Pop Shop	9	Village traffic residents only	2
Pub	8	Festival/fete	2
Sort Pot Holes out	5	More volunteers	2
Less heavy traffic	5	Cut back vegetation	2
Stop traffic rat run	4	Fewer Night Flights	1
Footpaths/Pathways throughout the village	3	Advanced warning of spraying	1

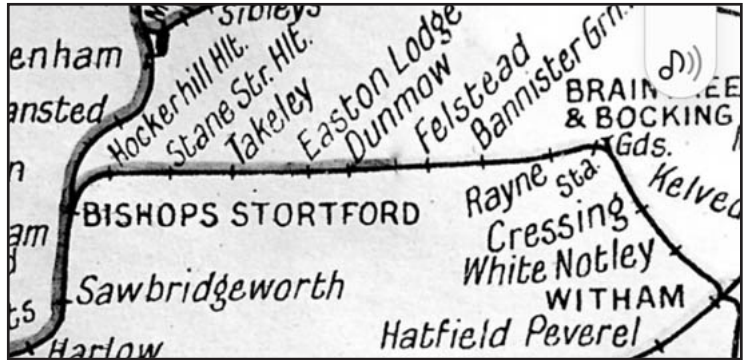
<b>Amenities for Children/Young Adults</b>			
What	Number	What	Number
Playground/Park VH	16	Tennis Courts	1
Youth Club	3	Play area Mead Fields	1
Safe footpaths throughout	2	Nothing	1
Family Days	1	Any means of socialising	1

<b>Social Events</b>			
What	Number	What	Number
Quiz nights	14	Pub	1
Social evenings	10	Murder Mystery nights	1
Family fun days	7	Annual music festival	1
Coach & theatre trips	6	Sport for children	1
Coach & sporting event trips	5	Film Nights	1
Bingo nights	5	Card evenings	1
Car boot/Table top sale	4	Regular farmers market	1
Exercise classes in VH	2	Coffee morning	1
Flower festival/Fete	2	Social days	1
Themed events (Hallowe'en, Easter etc)	1	Social events for working parents	1

<b>How Do You Find Out What Is Happening In The Village (Events/Road Closures Etc)</b>						
How	Highlights	Notice Board	Social Media	Comm Website	Pc Website	Other
No of houses	18	5	11	10	3	6

## Hidden History of Great Hallingbury

Most people who walk the Flich Way know that it was the old Bishop's Stortford to Braintree railway line. The line was conceived by a group of local businessmen who saw the opportunity of getting produce into London more efficiently. However, it ran into financial problems and was finally completed with the help of GER only to stop other companies building competing lines in the area.



The first passenger train left Braintree on 22<sup>nd</sup> February, 1869, but the bulk of traffic was always commercial for the likes of the Dunmow bacon factory and Geest bananas in Canfield. In 1922, Stane Street Halt was added, more like a bus stop than a station but one could get on a train in the village.



The most notable passenger to grace the line was The Prince of Wales, later King Edward VII, a visitor to Easton Lodge to see Frances (Daisy) Evelyn Maynard. She was favoured by Queen Victoria initially who later remarked *She is fast, very fast.*

Passenger numbers reduced from the 1920's although freight traffic remained buoyant. The last scheduled passenger train was the 8.15 pm service on 1<sup>st</sup> March, 1952.

The main reason the line closed was due to the Dunmow viaduct becoming unsafe and too costly to repair.

The final train ran on 27<sup>th</sup> July, 1972. Luckily for the village the plan to convert it to the new A120 was not adopted and instead we now have the first mile or so of the 15 mile trail loved by many.



Alan Pinnock

# DANIEL ROBINSON & SONS

Independent Family Funeral Directors & Monumental Masons



- A professional, caring, 24 hour service
- Arrangements in the comfort of your own home, if preferred
- Private Chapel of Rest
- Pre-payment Plans
- Fleet of air conditioned limousines & horse drawn funerals
- Free bereavement counselling

79/81 South Street  
BISHOP'S STORTFORD  
01279 655477

[www.drobinson.co.uk](http://www.drobinson.co.uk)  
*Dedicated to serving our  
local community*

Bullfields  
SAWBRIDGEWORTH  
01279 722476



## A wish for the Genie

A woman rubbed a bottle and out popped a genie. The amazed woman asked if she got three wishes. The genie said, *Nope, sorry, three-wish genies are a storybook myth. I'm a one-wish genie. So... what'll it be?*

The woman did not hesitate. She said, *I want peace in the Middle East. See this map? I want these countries to stop fighting with each other and I want all the Arabs to love the Jews and*



*Americans and vice-versa. It will bring about world peace and harmony.*

The genie looked at the map and exclaimed, *Lady, be reasonable. These countries have been at war for thousands of years. I'm out of shape after being in a bottle for five hundred years. I'm good but not THAT good! I don't think it can be done. Make another wish and please be reasonable.*

The woman thought for a minute and said, *Well, I've never been able to find the right man. You know - one that's considerate and fun, romantic, likes to cook and help with the house cleaning, is good in bed, and gets along with my family, doesn't watch sports all the time and is faithful. That is what I wish for...a good man.*



The genie let out a SIGH, rolled her eyes and said, *Let me see the map again.*



## Great Hallingbury History Society



History is all around us.

Can you feel it when you look across the ploughed fields or gaze up at the church spire?

The village of Great Hallingbury was shaped by the landed gentry of times gone by and this was no more evident than at Great Hallingbury History Society's September meeting this year.

Philip Hays gave a fascinating introduction to the house and estate of *Hallingbury Place* which was sold through a series of auctions a hundred years ago. The sale included farms, land, cottages, a pub and smithy from as far flung as Takeley, Hatfield Broad Oak, Little and Great Hallingbury and Bishop's Stortford, as well as Hatfield Forest itself.



*The Attractive Country Seat of Hallingbury Place* once encompassed an estate of over 3,000 acres and was the home of the Archer Houlton family who had been instrumental in the establishment of the Bank of England. The house itself contained 7 reception rooms with 12 bedrooms and dressing rooms as well as 20 staff bedrooms and *Capability Brown* designed extensive areas of the estate.

Committee members had been toiling away in the background for the previous six months contacting residents of properties once



Outdoor Staff in 1920

owned by the Houltons and we welcomed over seventy visitors with a glass of wine and nibbles.

These visitors brought with them tales of ancestors who worked as maids at the great house, getting up at the crack of dawn aged 14 to clear fireplaces; of wood panelling from the great rooms being bought by residents of Bishop's Stortford to line new walls; and of tunnels discovered under properties built over the land of the demolished country house.

They brought in original deeds, letters and papers. We heard the heartfelt excitement of a soldier writing to his mother about the visit the King made to *Hallingbury Place* in 1915 to review the troops before they headed off to the trenches and the beautiful tale of love between a gamekeeper and a young lass he apprehended picking blackberries on the estate that resulted in a wedding.

The involvement of local residents is paramount to keeping the society thriving and we welcome new members and visitors with open arms. Coming up over winter we have speakers on Norfolk Wherries, Archaeology at Stansted Airport and the POW Camp at Hatfield Heath.

If I have piqued your curiosity and you would like to come along to our meetings, they are held at 8pm on the second Wednesday of the month at Great Hallingbury Village Hall. More details may be found on page 29.

See you there!

*Claire Layer, Secretary*



# Great Hallingbury

There is plenty to anticipate in Great Hallingbury Plan questionnaire told the Parish Council some of the village so we have taken steps to accommodate

## QUIZ NIGHTS

There are three quiz nights booked. Starting in 2025, it is intended that one quiz each year will be for charity, with the proceeds going to a nominated charity.



For 2025 the beneficiary of the charity quiz has already been selected. Funds raised at the quiz on 15th March will go to a Dementia charity. This was nominated by Carole Morris whose husband, Geoff, many of you will have known. He was a village stalwart and a frequent attendee at quizzes for many years.

Moving forward, future charity quizzes will be held in September, so anyone who has a local charity that is close to their heart can nominate that charity and say why the proceeds should go there. From the nominations received, one will be randomly selected. All we ask in return is that the charity supports the quiz with a table. More news in the future about where and how to put your charity forward.

## TON CLUB RENEWAL

Following a short hiatus, we will be reintroducing the Ton Club from March 2025. For £12 you can buy a number from 1-100 for a one-year subscription with prize draws monthly. Half the money raised is distributed as prizes and the other half goes towards the upkeep of our beautiful Village Hall. More details will follow from the organiser, Claire Ridgewell, in *Great Hallingbury Highlights*, on the Great Hallingbury Community Website and The Great & Little Hallingbury Facebook page.



## SOCIAL EVENINGS

The Social evenings have proved very popular. As the Village Hall is the only location within the village, save for Hallingbury Manor, it was a logical location to host informal evenings where people can come and chat to existing friends and neighbours and even meet new neighbours.



Starting at 7 pm, the plan is to hold eight events during the year. Thus far we have arranged dates for social evenings on 11th January, 15th February, 5th April and 17th May with more to follow in the second half of the year. In addition to these dates, there will be a social evening following the Lighting of the Christmas Tree on Saturday, 30th November, beginning at 6.30pm.

## CALENDAR 2025 AT A GLANCE

January	February	March
Saturday 4th	Saturday 8th	Saturday 8th
10 am - 12 noon	10 am - 12 noon	10 am - 12 noon
<b>Pop Up Café</b>	<b>Pop Up Café</b>	<b>Pop Up Café</b>
Saturday 11th	Saturday 15th	Saturday 15th
7 pm	7 pm	7 pm
<b>Social evening</b>	<b>Social evening</b>	<b>Charity Quiz</b>

# Village Events 2025

in 2025. People who completed the Neighbourhood things they would like to see happening in the what we can in the Village Hall environment



## POP UP CAFÉ Village Hall 10am-12 noon

There will be a number of pop up cafés on a Saturday morning. This is very much a try it and see concept but, if they are successful and well attended, then times and frequency may change subject to availability of the hall. Thus far we have arranged dates for the first half of the year on 4th January, 8th February, 8th March, 10th May and 7th June.

If you would like to help run one of them, please contact any member of the Village Hall committee.

## CALENDAR 2025 AT A GLANCE

April	May	June
	Saturday 10th	Saturday 7th
	10 am - 12 noon	10 am - 12 noon
	<b>Pop Up Café</b>	<b>Pop Up Café</b>
Saturday 5th	Saturday 17th	Saturday 14th
7 pm	7 pm	7 pm
<b>Social evening</b>	<b>Social evening</b>	<b>Social evening</b>
		Saturday 29th
		8 am sellers 9 am public
		<b>Table top sale</b>

## TABLE TOP SALE

We will be holding a table top sale on Saturday, 29th June, 2025, 9am - 12pm. Sellers can set up from 8 am.



There will be a maximum 12 tables (6ft x 2.5 ft) at a cost of £10 per table. Refreshments will be available. Carpark for public use. (More details to follow).

## OTHER EVENTS

The recent village questionnaire threw up various other suggestions as to what people may like to see happening in the village from family fun days, theatre or sports trips including travel, music festivals, bingo, card and games evenings to themed events such as Hallowe'en, Easter etc.

These are all good ideas but, like anything else, they need organisation, co-ordination and volunteers on the day. The Village Hall is for residents to use - so, if you have a burning desire to put on an event for villagers, then again, please contact a member of the VH committee.

## CHRISTMAS 2024

Don't forget we still have events planned for November and December 2024. The annual *Christmas Tree Lit* Saturday, 30th November, when there will be refreshments provided by Great Hallingbury Parish Council and sweets for children provided by the Village Hall committee. Bring your own drinks and nibbles for the social evening afterwards.



The final event of 2024 will be the Christmas Quiz night on Saturday, 7th December. *Christmas outfits encouraged!*

## A Well Planned Retirement

Outside the Bristol Zoo, there is a parking lot for 150 cars and 8 coaches or buses.

It was manned by a very pleasant attendant with a ticket machine charging cars £1 and coaches £5.

This parking attendant worked there solidly for all of 25 years. Then, one day, he just didn't turn up for work.

*Oh well, said Bristol Zoo Management, we'd better phone up the City Council and get them to send a new parking attendant...*

*Err ... no, said the Council, that parking lot is your responsibility.*

*Err ... no, said Bristol Zoo Management, the attendant was employed by the City Council, wasn't he?*

*Err ... NO! insisted the Council.*

Sitting in his villa somewhere on the coast of Spain, is a bloke who had been taking the parking lot fees at Bristol Zoo, estimated at £400 per day, for the last 25 years.

Assuming 7 days a week, this amounts to just over £3.6 million



***Urban Myth or Grain of Truth?***



## Busy times for Hallingbury Ladies

The three summer months have been very busy ones for HALS. In July we entertained Alan Mair, a retired Policeman and Protection Officer. He described his work for the Police National Search Centre leading Crime Scene Teams on licensed Crime Scene Searches. He reminded us of the history of solving crimes starting with the uses of finger printing in 1888 and then the development and use of D.N.A. from 1983. Criminals are aware of these new techniques but often leave something behind or take something with them which leads to them being caught. There is a lot of luck in solving cases as well as experience.

This was followed in August by the welcome return of Charles Garland to speak of his life story entitled, *From Vicar's Son to BBC Producer*. Charles is an excellent speaker and, for this talk, he needed no prompting to outline his journey from being a dancer (right place, right time) to finally ending up at the BBC as a producer. Along the way he showed his willingness to respond to every opportunity offered. Throughout his career he worked as a musician, despite being unable to read music, and became expert at many things from running a restaurant to being a bandsman in the army. He found work in television, finally moving from being a producer to working as a director with David Croft.

Our Speaker for September was children's author and illustrator, Gillian McClure. Gillian had been a teacher in 1974 when her pupils were taught reading using the Initial



Teaching Alphabet. She noticed that this made it more difficult for children to make the change when they moved on to regular reading books. To help them she made some homemade books, both writing and illustrating them herself. These were seen by a school inspector who sent them to a small publisher and the rest, as they say, is history. She continues to write new books and illustrate them herself finding ideas in life and nature and sometimes from the people she meets. A very interesting evening.



Our monthly walks have continued throughout this time with one being an all-round trip of about 5 miles! In August the walk started at the Church and terminated

at Claire's abode where the group enjoyed delicious refreshments and plenty of water as it was a very hot day.



The monthly lunches resumed in September with a visit to the Three Horseshoes in Spellbrook.

The events programme has been quite full also with visits to the Greyhound racing in Harlow in July (which had races cancelled due to the rain) and September when twelve of us enjoyed a meal and a full programme of races. There were two dates for afternoon tea at Hunters Meet when we all used the vouchers we received when the WI closed.

Our Knit and Natter group finally met for the first time at Hunters Meet in September. After a very enjoyable get together (with tea and cake) a date was made for the next month.

The new Book group also had its inaugural meeting in September and there was a brisk discussion about the book (*Violeta* by Isabel Allende) which everyone had read. We will be meeting again in November.

We are looking forward to the next two months with a visit from a ventriloquist on November 27<sup>th</sup> and an afternoon meeting in December with food, Secret Santa and the famous Left Right Game. In addition we have a special afternoon tea and flower arranging demonstration on 29<sup>th</sup> November.

If you want to know more come and join us in the Village Hall.

*Gill Sewell*

*marjroierosegs@hotmail.com/  
hallingburyladies@yahoo.com*

## Hallingbury Ladies



### CHRISTMAS FLOWER ARRANGING

Demonstration with Ann

Friday,  
29th November, 2024  
1.30 for 2 pm



with afternoon tea and a raffle in Great Hallingbury Village Hall

Tickets £10 Contact

Sally Stuebler  
01279 658751



## Easy Eating

### Merry Christmas Jam

#### Ingredients

- 2 cups strawberries, hulled and chopped
- 2 cups cranberries, fresh or frozen
- 4 cups granulated sugar
- ½ cup orange juice
- ¼ cup water
- 1 tbsp grated orange zest
- ½ tsp ground cinnamon
- ¼ tsp ground cloves
- 1 (1.75 oz) package fruit pectin

#### Method

1. In a large pot, combine the chopped strawberries and cranberries. Add the orange juice and water. Bring to a boil over medium high heat, stirring occasionally. Reduce heat and simmer until the cranberries burst and the mix softens, about 10 minutes.
2. Stir in the fruit pectin and bring the mixture to a full rolling boil that cannot be stirred down. Boil for 1 minute, stirring constantly.
3. Gradually add the sugar, stirring until dissolved. Add the grated orange zest, ground cinnamon and ground cloves. Return to a full rolling boil and boil hard for 1 minute, stirring constantly. Remove from heat.
4. Pour into clean jars



*Merry Christmas Jam*

### Mincemeat Flapjack

#### Ingredients

- 150 g salted butter, plus extra for greasing
- 4 tbsp golden syrup
- 75 g light brown soft sugar
- 250 g porridge oats
- 3 tbsp mixed seeds (including pumpkin, sunflower, linseed and sesame)
- 1 orange (scrubbed) zest
- 200 g mincemeat



#### Method

1. Preheat the oven to 200°C, gas mark 6.
2. Grease and line the base and sides of an 18cm x 25 cm baking tray with baking parchment.
3. Put the butter, golden syrup and sugar in a large, heavy based pan. Heat gently, stirring often, until the butter and sugar have just melted and the mixture is beginning to bubble (3-4 minutes)
4. Remove the pan from the heat and tip in the oats, 2/3rds of the seeds and the orange zest. Using a wooden spoon, mix everything together well.
5. Tip half the mixture into the prepared tray. Dip a large metal spoon in cold water and then use the back to evenly spread the mixture out into a thin layer. Spoon over the mincemeat and carefully spread it over the top. Finish with the remaining oat mixture, levelling it off as best you can, then scatter over the remaining seeds.
6. Bake until golden, bubbling and beginning to caramelize slightly around the edges (18 - 20 minutes)
7. Use a knife to score the surface of the flapjack into 12 fingers, then leave in the baking tray to cool before turning them out onto a board and cutting through properly. The flapjacks will keep in an airtight container for 6 days.

# Highlights from Minutes of a Meeting of Great Hallingbury Parish Council 9 September 2024

**Present:** Cllr Alan Townsend (Chairman), Cllrs David Barlow, Mark Coletta, Andrew Noble and Val Waring, Mrs Urška Sydee (Clerk), County Cllr Susan Barker and two members of the public

## **Howe Green Overgrown Vegetation**

Members of the public reported that the footpath is overgrown by bushes and a tree has fallen. These are both Highways issues and need to be reported to Essex Highways department.

## **Neighbourhood Plan Boundary Map**

The clerk had contacted UDC was asked for greater definition. It was agreed to ask for the whole village boundary.

## **Chairman's Communications**

Cllr Townsend had met with Peter Holt, CEO of UDC, regarding Parish Forum meetings. It was agreed later that they would contact UALC before the forums so that items in which Parishes in Uttlesford are interested would put on the agenda rather than items that UDC decides.

- UALC meeting
- UDC's Parish Forum
- UALC AGM
- Planning meeting at which he spoke on behalf of Great Hallingbury Parish Council regarding the latest proposed Local Plan
- EALC Personnel and Executive Committee
- Safety Panel meeting where he met our new MP
- weekly zoom meeting with the clerk
- checked defibrillator weekly.

## **Highways Matters**

- Howe Green overgrown vegetation is still an outstanding issue.



- Potholes on Woodside Green are expected to be repaired week commencing 9 September 2024.
- An email from the Parish Council to the Police regarding the Increased number of lorries driving through the village has been passed to their commercial vehicle unit to ask for assistance in our area.
- Cllr Coletta reported that vegetation on the B1256 is still a problem; he was authorised to write a letter on the matter.

## **Essex County Council**

Cllr Barker reported that more potholes will be repaired and more vegetation on Highways owned land cut now additional funding was available. Cllr Coletta advised that the bus stop is overgrown as well as the footpath on B1256 and that bollards from works are still lying around. He was asked for photos and Cllr Barker agreed to check the situation. The deadline for comments on the latest revision of UDC's Local Plan has been extended until 14 October 2024.



## **Stansted Airport**

A question was raised whether there is a period when night flights are not allowed. More passenger flights at night had been noticed and it is not possible to question this through the complaints phone line. The Clerk will write to Stansted Airport Watch regarding this matter.

## **Speedwatch Group**

There are not enough volunteers and therefore the group has not been so active. The Police have been seen on the B1256 at night.



## **Neighbourhood Watch**

The Neighbourhood Watch currently has 78 members. One fly-tipping occurrence was reported.

## **Village Hall**

The Christmas Lights Switch On will be on 30th November 2024. The Parish Council will provide refreshments.



## Neighbourhood Plan

Cllr Waring reported that a questionnaire was delivered with *Great Hallingbury Highlights*. So far 15 replies have been received. These will be collated according to priority.

## Great Hallingbury Community Website

Great Hallingbury Community

The website is up and running but there are still a lot of separate pages which are expanding. Volunteers to help with Highlights are needed.



## Noticeboards

Cllr Coletta has exchanged several emails with Highways regarding the installation of a noticeboard on the B1256 and they still want more information.

He will try to provide the requested information but if this is not resolved soon, he will quit.

Cllr Noble will be in contact with Cllr Pinnock regarding the position of noticeboard on the new development.

## Litter Pick

The next litter pick was scheduled for 13th October 2024.

## Post Box at top of Goose Lane by Woodside Green

It was agreed for the clerk to draft a letter to be sent to the MP.



## Making the Flitch Way Railway Bridge a Community Asset

Cllr Coletta proposed that the Flitch Way Railway bridge should be registered as a community asset. The Clerk is to obtain the necessary form from UDC.



## Planning

Application No // Site and Development  
// Decision

(the Council's comments are shown in brackets)

## Application Decisions

UTT/23/1470/OP and reconsultation // Stansted Distribution Centre, Start Hill // Outline planning application with all matters reserved for the demolition of units 1B, 2A, 2B,

3, 4, 6, 7, 8 and structures at Pontins Yard, and redevelopment for flexible commercial uses with realignment of internal access road, car parking, servicing yards, soft landscaping and other associated works // Awaiting decision (Strong objections detailed in a previous edition)

UTT/23/0957/FUL // Start Hill Service Station, Start Hill // Creation of charging zone, erection of EV chargers, erection of canopy, two jet wash bays, sub-station enclosure and associated forecourt works // Awaiting decision (Objections detailed in a previous edition)

UTT/23/2269/FUL // The Bungalow, Tilekiln Green // two new accesses to existing dwelling // Awaiting decision (No objections)

UTT/23/2840/HHF // Highfield, Church Road // Demolition of existing conservatory. Proposed part single storey and part two storey rear extension. Proposed front extension to create a gable feature. Replacement of existing bay windows with square bay windows and new roof to accommodate first floor layout changes // Approved (No objections)

UTT/24/0557/FUL // Units 25 to 26, Stansted Distribution Centre, Start Hill // Demolition of all structures in order to return site to original condition in accordance with lease agreement // Awaiting decision (No objections)

UTT/24/0446/FUL // Marstons, Stane Street, Start Hill // S73 application to vary plans condition on planning permission UTT/21/0692/FUL (erection of eight dwellings) as amended by UTT/24/0706/NMA - amendments to approved plans // Awaiting decision (No objections)

UTT/24/1370/FUL // The Hop Poles, Bedlars Green // Change of use from public house to residential, changes to boundary and additional parking space to The Spinney, and construction of one self build dwelling in car park // Awaiting decision (Objections detailed in previous edition)

UTT/24/1371/LB // The Hop Poles, Bedlars Green // Conversion of public house to residential including alterations to listed building // Awaiting decision (No objections)

UTT/24/1531/FUL // Old Cottage, Start Hill, Stane Street // S73 application to vary condition 2 (approved plans) attached to UTT/21/3339/FUL (Proposed erection of seven dwellings including the closure of existing access, creation of new access and associated infrastructure) - revision to approved drawings



// Awaiting decision (No objections)  
 UTT/24/1569/HHF // Old Tith Hall, Start Hill  
 // Construct a conservatory over existing first  
 floor terrace // Approved (No objections as  
 long as it's not denying light and privacy to the  
 neighbouring property)

UTT/24/1486/FUL // Land South East of Great  
 Hallingbury Manor, Tilekiln Green // S73  
 application to vary condition 2 (approved plans)  
 attached to UTT/22/1528/FUL (Application to  
 vary condition (approved plans) of planning  
 application UTT/20/0336/DFO - details  
 following outline application for 35 dwellings)

// Awaiting decision (No objections)

#### Applications Reviewed at Meeting

UTT/24/1531/FUL Re-consultation // Old  
 Cottage, Start Hill // S73 application to vary  
 condition 2 (approved plans) attached to  
 UTT/21/3339/FUL (Proposed erection of seven  
 dwellings including the closure of existing  
 access, creation of new access and associated  
 infrastructure) - revision to approved drawings  
 // (No additional comments)

UTT/24/2095/HHF // White Lodge, Latchmore  
 Bank // Site a Static Caravan

(No objections as long as it stays a static caravan  
 and is for domestic use only.)



## Essex Police



### Beat Surgery

PCSO Mike O'Donnell Smith holds regular beat surgeries in Little Hallingbury when you can raise any concerns you may have. The next one is being held on 4th December between 10am - 11am.

### Let's Talk

There is a new engagement from Essex Police, the *Walk and Talk events*. This offers residents and parish councils the chance to join the team on a foot patrol and chat about any local concerns. The first of these in Great Hallingbury is in on 16th November at 2pm, based at the Village Hall. There is not yet a pattern of dates so please keep an eye on the *Great Hallingbury Community website* for future dates.

### Property Marking

The Community Policing Team is supporting farmers across Uttlesford by providing them with unique forensic property marking kits. The team has secured funding to offer DNA property marking kits to all working farms across the district.

The kits are free of charge with no ongoing costs and they will be delivered and demonstrated by the local community policing team. The kit is unique to the user and can mark up to 50 items.

If you are interested in obtaining a kit or for more information, please email Uttlesford. [cpt@essex.police.uk](mailto:cpt@essex.police.uk)

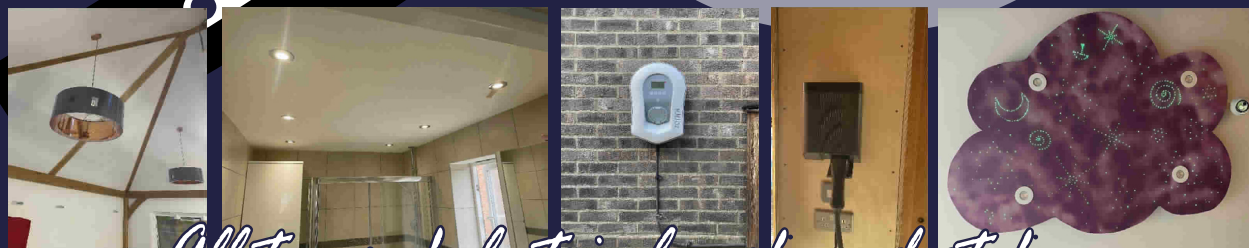
### Emergency Contact

You will find information on how to contact the police in an emergency on the *Great Hallingbury Community website*. You will find some interesting tips.

What word looks the  
 same upside down  
 and backward?

SWIMS

# LIGHTSOURCE ELECTRICAL



*All types of electrical work undertaken*

**07988 171076**

[lightsourceelectrical@gmail.com](mailto:lightsourceelectrical@gmail.com)

[www.lightsourceelectrical.co.uk](http://www.lightsourceelectrical.co.uk)



  
novuscare

## Care in the heart of your own home

Are you or an elderly loved one looking for extra care and support at home in **Great Hallingbury or the surrounding areas?** Then our local carers are here to help.

Novus Care is regulated by the Care Quality Commission and can provide a qualified carer to support your loved one in their own home from just **30 mins per week to full-time live-in care.**

For more information or to arrange a **FREE** assessment, please call: **01268 960285** or email: [hello@novus-care.com](mailto:hello@novus-care.com)

[www.novus-care.com](http://www.novus-care.com)

## District News

*Cllrs Geof Driscoll and Neil Reeve*



### *Little Hallingbury Village Hall*

I (Geof) enjoyed a Tuesday morning recently in Little Hallingbury Village Hall. It started with a chair fitness workout, soft exercises to loosen one's joints as we get older, and was conducted by Claire to music. I found this a very social event with everyone present enjoying the session but I think that the group could benefit with a few men joining in, so how about it guys.

After the exercise, I was ready for a coffee and, low and behold, my prayers were answered by Alzy's Coffee Bar, also based in the Village Hall. All customers were made welcome from mums on their way home from the school run to those working on lap tops or just checking emails on their phones. I will certainly visit again.

Thanks go out to both Clare and Alzy along with Sue Meyer for her invitation and the ladies of the fitness group who accepted me without question.

### *Royal Voluntary Service*

Talking of village halls, like most of a certain age, I had to attend my doctor's surgery for a couple of Jabs recently and came across a leaflet from RVS. Brought to you by the charity, the *Virtual Village Hall* is a free, online activity hub and community designed to help people stay physically and mentally active, connected and having fun. There is no sign in or subscription required. There are 12-15 live sessions (from Art to Zumba) every week and a library of 2,000 sessions, all led by expert tutors and presenters, open to all. Join in live daily on Facebook, YouTube or X or catch up on YouTube or the *Virtual Village Hall* website when it suits. [facebook.com/VirtualVillageHall@VirtualVillHall](https://facebook.com/VirtualVillageHall@VirtualVillHall)  
[royalvoluntaryservice.org.uk/vvh](https://royalvoluntaryservice.org.uk/vvh)  
YouTube: search *virtual village hall*

### *Winter approaches*

Although our winters appear to me to be milder than when I was a young lad, the weather is changing and now is the time to prepare for the approaching Winter season. I would like to reiterate my message of last month that should you find you need any help or advice on benefits or finance, please do call one of the following, do not be proud.

- Citizens Advice East Herts (Bishop's Stortford) - 01920 459944 <https://www.citizensadviceeastherts.org.uk>
- Citizens Advice - Saffron Walden - 01799 618840 <https://www.uttlesfordca.org.uk>
- Uttlesford District Council - 01799 510510 <https://www.uttlesford.gov.uk>

UDC's website has a selection of independent, free and anonymous benefits calculators to check what you could be entitled to and give you an estimate of:

- the benefits you could get
- how much benefit payments could be
- how your benefits will be affected if you start work or increase your hours
- how your benefits will be affected if your circumstances change - for example, if you have a child or move in with your partner

### *Winter Safety Kit for Cars*

Uttlesford is a rural District and many residents rely on using a car to get out and about. These are some easy items you could put together to help you stay safe this winter. They may help in the event of a breakdown or bad weather. The choice of items will be yours to form a minimal basic option but I believe you should consider something more substantial.

**A well-prepared winter driving kit should include:**

- Torch and batteries.
- First-aid kit.
- Ice scraper and de-icer.
- Wellies or winter boots.
- Snow shovel.
- Screen-wash.
- A blanket.

- Jump leads
- Reflective warning triangle - ideally two
- Sunglasses (Low Sun months)
- In-car phone charger - and a portable battery charger
- Chocolate bar, packet of crisps and water/soft drinks and/or hot flask in case of being stranded.

### **More Advice from the RAC**



Consider your car for winter use and bad weather when carrying out that school trip, travelling to or from work or visiting friends and relatives.

**Fuel** - ensure you have enough fuel for your journey, filling up before setting off. Cars use more fuel in heavy traffic and start/stop conditions which can occur, especially in wintry weather. If the weather changes and the journey takes longer than you expect, you could encounter problems.

**Oil** - Check your oil level using the dip stick and top-up if necessary - check your handbook for guidance and to ensure you use the correct oil. Locate the oil cap with the oil can symbol on it and pour in the right amount. Make sure you replace the cap fully and be careful not to overfill as this can cause more problems.

**Rubber** - Check your tyre tread depth and air pressure. Well-maintained tyres are vital to give you traction and grip on icy, wet surfaces. Your car's recommended tyre pressure can be found either in your car's manual or inside the driver's door. The legal tyre tread depth for cars in the UK and Europe is 1.6mm. Check your tyre tread depth using a tyre gauge, the marker bars on your tyre or a 20 pence coin. If you can't see the outer band of the 20p your tyres are within the legal limit. RAC recommends you check your tyres every fortnight and before long journeys. Ideally a minimum tread depth of 3mm in icy or very wet conditions is recommended.

**Wiper Blades** - In winter your windscreen can get very dirty from rain, snow, ice and

road salt. Maintaining good visibility is imperative so check your wipers are doing the job by spraying some washer fluid and checking they clean the windscreen. Then get out of the car and run your fingers along the length of the blades to check for splits. It's recommended to change wiper blades every 12 months.

**Screen Wash** - top up your screen-wash with a product that is effective down to at least -15 degrees Celsius. This additive helps to keep the windscreen free of ice, dirt and winter road grime which can cause visibility issues, especially during the low sun months of November/December to February/March.

**Coolant** - (a mixture of water and antifreeze) is pumped around your engine to cool it. Regularly check your engine coolant level and top-up if required. Only check this when the engine is cool otherwise you risk scalding yourself. It's not normal for the coolant level to drop suddenly so, if it does, get it checked out at a garage. You should find the coolant is between the min/max marks on the side of the tank.

**Electrics** - Check your lights and indicators are all working properly and replace bulbs or fuses if required. Battery problems are the reason for more RAC call-outs in winter than anything else.

### **Ward Surgeries**

These surgeries are for you to discuss issues that you may have with UDC that we, as your District Councillors, can help with or represent you where possible. Please do come along and have a chat. You do not need to arrange an appointment, they are walk in surgeries. They are held on the first Tuesday of each month at Great Hallingbury Village Hall, 2 - 4pm and the third Friday of each month at the Dukes Head PH, Hatfield Broad Oak also between 2 - 4pm.

And the normal reminder that, should you need to contact us, you can email us.

[cllrdriscoll@uttlesford.gov.uk](mailto:cllrdriscoll@uttlesford.gov.uk)

[cllrreeve@uttlesford.gov.uk](mailto:cllrreeve@uttlesford.gov.uk)

## EASTON LODGE

We are hoping for a good cold December! Early in December 2022, we had hard frosts for many days on end, the ground was frozen solid and mid-month there was snow. We lost perennials and shrubs because it was so exceptionally cold that winter.



But in December 2023, we didn't have any frost that I can recall, followed by mild temperatures in January and rain galore over the whole winter season, such that we had to cancel most of our snowdrop open days. The early season was then blighted by the slugs and snails which had overwintered, multiplied and were voracious. So, although there are risks from frosts, we have our fingers crossed for a decent blast of freezing air!

Our winter works are progressing with lots of effort put into leaf clearance, putting them into new bays to make leafmould. We never have enough as we have so many trees, roses, dahlias, rhubarb and fruit bushes that benefit from it. We also put out a call for manure and have spent happy hours barrowing that around the Gardens!

In December we will finish those jobs and take time to reflect on what visitors enjoyed this year, to build a good calendar of events for 2025.

To keep an eye on how we are getting on, why not follow us through Facebook or Instagram or take a look at our Garden News on the front page of our website or sign up to an e-newsletter through [www.eastonlodge.co.uk](http://www.eastonlodge.co.uk)

*Jill Goldsmith*

## Great Hallingbury History Society



### PROGRAMME SPRING 2025



### Archaeology at Stansted Airport

*by Richard Havis*

**Wednesday, 8th January**

### Hatfield Heath Prisoner of War Camp

*by*

*Mark Ratcliff*



**Wednesday, 12th February**



### Family Memories through Precious Items

*by Tim Turner*

**Wednesday, 12th March**

Meetings held in

Great Hallingbury Village Hall at 8pm

Entrance Fee Including Refreshments:

£3 for Members

Membership £10 pa

£5 for Non-members

**EVERYONE IS WELCOME**



Presents  
Our 40<sup>th</sup> Production

# Cinderella

Little Hallingbury Village Hall  
Thursday 30<sup>th</sup> January - 7.30pm  
Friday 31<sup>st</sup> January - 7.30pm  
Saturday 1<sup>st</sup> February - 2.00pm  
Saturday 1<sup>st</sup> February - 7.30pm

£10 / £8 concessions

**Box Office:**  
[thelittleboxoffice.com/hallingburypanto](http://thelittleboxoffice.com/hallingburypanto)



SCAN FOR BOX OFFICE!

## Charity Craft Sale

Great Hallingbury residents, the Lawrence family, recently held a craft sale in support of four charities including Bereaved Children and House of Hope.

The items were all crocheted, knitted or made from recycled materials: large stars from drinking straws, smaller ones from the plastic inner tubes of household



dispensers, crocheted candles, decorated glass bottles to hold candles or use as a vase, lampshades for wine glasses which hold electric tealights or baubles. Plastic bottles provided light catchers and electric tea light holders using the bases, the sides of 5litre bottles were made into wreaths and bells from the tops. And so many more things including cards, gift bags, crocheted mini crackers and knitted little stockings. The imagination!

Many congratulations on the money you raised for your charities.



## Hallingbury Place - as Viewed in the Local Press

### *Read All About It*

*Following the successful meeting of the Great Hallingbury History Society in September which focused on Hallingbury Place and its sale and sad demise, this article looks at four events relating to Hallingbury Place, as recorded in local newspapers.*

### **103 years ago**

*The Herts and Essex Observer (4<sup>th</sup> June 1921) reported on a garden fete held on 31<sup>st</sup> May at Hallingbury Place, the gardens having been placed at the disposal of the organisers by Mrs Lockett Agnew.*

The total attendance was over a thousand. Much admiration was expressed by the visitors for the artificial lake, the rock garden, with many of its plants in bloom, and the rose garden which will present a magnificent sight when the blossoms are finally out.

The organisation was in the hands of the Committee of the Thorley and Great Hallingbury Nursing Association, in aid of which the fete was arranged. Mention should be made of Mr Heath, Head Gardener to Mrs Lockett Agnew, who rendered valuable service by fencing off the various enclosures and preparing the garden, and of his wife who was entirely responsible for serving teas which kept her and some fifteen assistants busy for nearly three hours.

During the afternoon Messrs Perry's String Band from Bishop's Stortford played



selections on the lawn. Other attractions included a sale of work, concerts, clock golf, hoopla and exhibitions of English Folk Dancing. An entertainment was also given by six boys from the Great Hallingbury School who had been trained by Mrs Tweed, the Headmistress. From seven o'clock until dusk, a large company engaged in dancing on the lawn. The music was provided by the String Band. In the competitions, the cake was won by Mrs Kirk, the sack of coal by Mrs Carr and the goat by Mrs Calverley.

*(According to the 1921 Census, Charles Heath, the Head Gardener at Hallingbury Place, and Fanny Heath lived in Park Gates. Charles Heath was born on 26<sup>th</sup> July, 1864, in Perry Wood, Worcestershire. He married Fanny Mitchell in Worcestershire on 25<sup>th</sup> November, 1895. By 1911 Charles and Fanny were living in Park Gates, Great Hallingbury. In the 1939 Register Charles and Fanny, both aged 83 years, were living in Park View, Epping. Charles died in 1946 and was buried in St Giles' Churchyard on 24<sup>th</sup> December).*

### **127 years ago**

*The Chelmsford Chronicle (26<sup>th</sup> November 1897) reported the inquest held into the death of Henry Bird, a labourer employed on the Hallingbury Estate. Loftus Howard, a labourer in the same employment, said that on the previous day he and the deceased and several others, with six carts each drawn by two horses, were carting gravel from Spellbrook to Hallingbury Place. As they were turning in the park gate on the Woodside Green Road, one of the deceased's horses swerved and the shaft pinned him against the gatepost. He was crushed by the wheel.*

The witness said that he picked the deceased man up. The deceased man, who was quite conscious, said *Oh dear*. The witness got the mule cart from Hallingbury Place and

the deceased was driven to the Bishop's Stortford Cottage Hospital. On the way they stopped at the home of Mr Browne, Colonel Houblon's agent, where the deceased was given some brandy and water. The deceased died before they reached the hospital. The jury returned a verdict of accidental death. The deceased leaves a widow and three children.

*(Henry Bird married Ellen Player in St Giles' Church on 23<sup>rd</sup> December, 1893. They had four children: Hilda, born in 1894; Robert, born in 1895; Frederick, born in 1896 and Mary, born in 1898, after the death of her father. In the 1911 Census Ellen Bird's occupation was recorded as a Charwoman. In 1921 she was living in 137 Start Hill with Frederick and Hilda. Robert, her eldest son, had sadly died in April 1917 in the Battle of Arras. According to the Chelmsford Chronicle, published on 18<sup>th</sup> May, 1917, Robert had been employed as a gardener at Hallingbury Place. Robert's body was never found and he is commemorated on the Arras Memorial. Henry Bird, aged 34 years, was buried in St Giles' Churchyard on 25<sup>th</sup> November, 1897. Ellen Bird died in 1926 and was buried in St Giles' Churchyard on 13<sup>th</sup> February, aged 63 years).*

### **131 years ago**

Under the headline *Poaching Affray at Great Hallingbury*, the *Chelmsford Chronicle* (13<sup>th</sup> October, 1893) reported that one poacher was caught and a second poacher escaped on the evening of 5<sup>th</sup> October on the estate of Colonel George Archer-Houblon of Hallingbury Place. After guns were heard on the extreme north-west corner of the Hallingbury Estate, Mr William Cooper, the gamekeeper, and Mr Philip Browne, junior gamekeeper, hid themselves in a belt of timber on the highway between Bishop's Stortford and Great Hallingbury and the River Stort. The captured man proved to be *quite a youth and the son of respectable people living in Bishop's Stortford*.

The second poacher, leaving a gun behind,

managed to run down the slope and into the river. Later that evening Supt. Tripp paid a visit to a house in New Town, Bishop's Stortford, where he found a man, *who had come home in drenched clothes, which he had changed*. A third man, who was the alleged owner of the gun, was also interviewed by the police. The matter now waits a magisterial investigation.

*(Philip Browne later became Colonel Houblon's estate agent. There is a strong oral tradition that this estate agent was the most disliked man on the Hallingbury Estate. He was not averse to treating school children to a lash of his whip as he passed by on horseback. According to Ernie Field in his publication *Pepys of the Past*, there were accusations of shortcomings in salary destined to compensate estate workers in their shortfall of pay, whilst serving in the Great War. Philip Browne was the starter in the Coronation Sports held in Hallingbury Park on 1<sup>st</sup> July to celebrate the coronation of George V).*

### **182 years ago**

*The Essex Standard* (8<sup>th</sup> April, 1842) reported on the leaving present given to Mr T F Salter, the steward of John Archer Houblon of Hallingbury Place, who was leaving his place of residence after eight years. *Upon the circumstances becoming known, the poor of the parish, without an exception, resolved upon themselves (wholly unsupported by the more wealthy), to testify their gratitude to Mr Salter by subscribing their pence to buy a silver cup which was presented to him on Easter Monday, amidst their regrets at his leaving them and their good wishes for his future prosperity and happiness.*

The cup was embossed with agricultural subjects. The following inscription was engraved: *Presented to Mr T F Salter of Great Hallingbury, by upwards of 300 labourers of the said parish, as a token of the many acts of kindness received at his hands during the eight years he lived amongst them.*

*Philip Hays*



## The Shredder

A young engineer was leaving the office at 5.45 pm when he found the CEO standing in front of a shredder with a piece of paper in his hand.



*Listen, said the CEO, this is a very sensitive and important document and my secretary is not here. Can you make this thing work?'*

*Certainly, said the young engineer. He turned on the machine, inserted the paper and pressed the start button.*

*Excellent, excellent, said the CEO as his paper disappeared inside the machine. I just need one copy.*

**Lesson: Never, never ever assume that your boss knows what he's doing**

## Poppy Appeal 2024



The 2024 Poppy Appeal is already up and running in both Great and Little Hallingbury. The first coffee morning in Great Hallingbury raised £450 for the Appeal. Thanks to everyone who gave their help on the day supplying cakes and attending and particularly to Christine Coultrup who provided the venue and, of course, the coffee.

With only one house to house volunteer there are now boxes in several shops, schools and businesses in the area if you wish to donate.

There will be another Community Coffee morning at Howe Green House School on November 11<sup>th</sup> followed by a short Remembrance Service provided by the pupils.

Thank you in advance for your continuing support.

Gill Sewell

The Hallingburys Poppy Organiser



GREAT HALLINGBURY VILLAGE HALL

# CHRISTMAS QUIZ NIGHT

**SATURDAY 7TH DECEMBER, 2024**

GREAT HALLINGBURY VILLAGE HALL 7 FOR 7.30 PM

£5 PER PERSON AT THE DOOR - TABLE OF 6 OR 8 OR JOIN ANOTHER GROUP

**RESERVE YOUR TABLE FROM SALLY  
(01279 658751)**

**GOOD PRIZES AND RAFFLE**

**BRING YOUR OWN FOOD AND DRINK**

**ENJOY A CONVIVIAL EVENING. SUPPORT THE VILLAGE HALL**

## The Hundred Parishes Society



One of the best ways to enjoy and appreciate our wonderful area is on foot, so the Hundred Parishes Society's website has always included a selection of walks. They have generally been focused on footpaths but last winter's exceptional rain made many paths difficult. This prompted us to develop a new series of walking routes that do not use any footpaths. We hope our *Quiet Lane Walks* will appeal to anyone who does not like cleaning boots and also perhaps to families, people with mobility problems or less-energetic cyclists.

Our website now has almost 40 *Quiet Lane Walks* in addition to over 100 established routes. You can find a route that suits you by either scanning the lists of walks or going to a specific parish introduction to see which route numbers go there - the *Quiet Lane walks* start with the number 3. We have put together quiet lane routes that visit 41 of our hundred parishes but we would welcome suggestions for more - just email a simple route outline to [hundredparishes@btinternet.com](mailto:hundredparishes@btinternet.com) and we will put together a full route description.



Hatfield Broad Oak

The new routes range in distance from 1 to 12 miles and pass through typical Hundred Parishes territory: lovely villages and attractive countryside, often with an inviting café or pub.

Route descriptions can be freely downloaded from our website and then printed. The



Helion Bumpstead

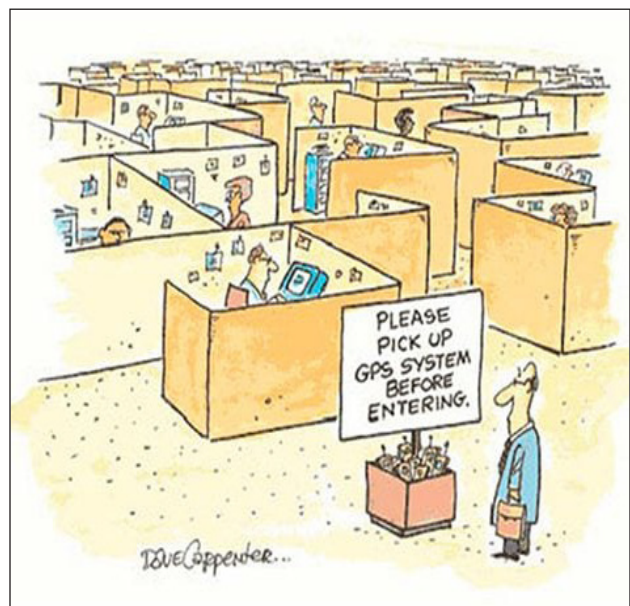
descriptions should ensure that nobody gets lost and they include snippets of information about places along the way.

If you do not have access to the internet but would like some walk suggestions, please write to The Hundred Parishes Society, 2 Greenfields, Stansted Mountfitchet CM24 8AH. We will send you a list of available routes and then print some for you. There is no charge.



Little Hadham

Ken McDonald, Secretary  
[www.hundredparishes.org.uk](http://www.hundredparishes.org.uk)



## St Clare Hospice

### *Light up a Life*



This is our annual celebration of everything that St Clare stands for - joining together with families from across our community in honour of their loved ones. Candles are lit as we remember, with every shining light representing the life and memories of a loved one.

We will be holding two services here at the Hospice in Hastingwood, the first of which is on Thursday, 12th December, at 7pm. Everyone, of all faiths and none, is welcome to attend these free services, not just those who have experienced St Clare's support first-hand.

During the service there will be music performed by The Salvation Army and a local choir as well as festive readings and refreshments.

Browse our festive stalls and pick up an early stocking filler or two. Our stallholders will be set up in the hospice dining room for you to visit after the service.

Book your tickets for *Light up a Life 2024*. By attending one of our special uplifting events this year, you will also be supporting St Clare to continue caring for local people facing life-limiting illnesses or experiencing bereavement and loss.

All donations made alongside your *Light up a Life* dedications are gratefully received, helping to fund our care for local people who need us - supporting them to live well and die with dignity.

There will also be a service at Hatfield Heath United Reformed Church on Sunday, 15th December at 4 pm.

It is free to attend but you need to book for the services at the Hospice. Please see our website [stclarehospice.org.uk](http://stclarehospice.org.uk) for information.



## Services in the Hallingburys

As you know, Rev'd Sophie Weller has just recently joined us as our Priest in Charge.

The patterns of worship in the Six Villages Churches are currently under review and we are unable to provide information for the coming period.

Please check our website at [www.thesixvillages.org](http://www.thesixvillages.org) for up-to-date and accurate information. The website has details of all services taking place across the Six Villages, and information about special events, our contact details and how to get involved.

## Grandparents' Voicemail



Good morning . . . At present we are not at home but please leave your message after you hear the beep.

If you are one of our children, press 1 and then select the option from 1 to 5 in order of "arrival" so we know who it is.

If you need us to stay with the children, press 2

If you want to borrow the car, press 3

If you want us to wash your clothes and ironing, press 4

If you want the grandchildren to sleep here tonight, press 5

If you want us to pick up the kids at school, press 6

If you want us to prepare a meal for Sunday or to have it delivered to your home, press 7

If you want to come to eat here, press 8

If you need money, press 9

**If you are going to invite us to dinner or take us to the theatre, start talking we are listening !!!!!"**



**Great Hallingbury  
Village Hall &  
Parish Council**

**Christmas  
Tree Lights  
SwitchOn**

**with Mulled Wine, Mince  
Pies, Sausage Rolls**

**Saturday  
November  
30th at  
6.30 pm**

**Let your children  
add their own  
decorations to the  
baby tree alongside**

**Social Evening  
NO CHARGE  
Bring your own drinks  
and nibbles**

## Calendar

### November 2024

- 27 Hallingbury Ladies - Christmas Surprise - Village Hall at 7.30 pm
- 29 HALS Flower Arranging Afternoon Tea - Village Hall 1.30 for 2 pm
- 30 Village Hall Christmas Tree Lights Celebration at 6.30 pm followed by Social Evening

### December 2024

- 3 District Councillors Surgery Village Hall 2 - 4 pm
- 4 Essex Police Beat Surgery Little Hallingbury Village Hall 10 - 11 am
- 7 Library Van - Bedlars Green 3 - 3.30 pm Woodside Green 3.40 - 4.10 pm
- 7 Village Hall Quiz Night at 7 for 7.30 pm
- 28 Library Van - Bedlars Green 3 - 3.30 pm Woodside Green 3.40 - 4.10 pm

### January 2025

- 4 GHVH Coffee Morning - Village Hall 10 - noon
- 6 Great Hallingbury Parish Council - Village Hall 8 pm
- 7 District Councillors' Surgery - Village Hall 2 - 4 pm
- 8 History Society - *Archaeology at Stansted* Village Hall 8 pm
- 30) Pantomime - Cinderella
- 31) Little Hallingbury Village Hall 7.30 pm

### February 2025

- 1 Pantomime - Cinderella - Little Hallingbury Village Hall 2 pm and 7.30 pm
- 4 District Councillors' Surgery Village Hall 2 - 4 pm
- 8 GHVH Coffee Morning - Village Hall 10 - noon
- 9 Easton Lodge Snowdrop Sunday
- 12 History Society - *Hatfield Heath POW Camp* - Village Hall 8 pm
- 13 Easton Lodge Snowdrop Thursday
- 16 Easton Lodge Snowdrop Sunday
- 20 Easton Lodge Snowdrop Thursday

### March 2025

- 15 Charity Quiz - Village Hall 7 for 7.30 pm

**Come to the next Parish Council meetings - ask your questions - give your views. See how the Parish Council works for you.**

Monday, 6th January 8 pm Village Hall

Monday, 3rd March 8 pm Village Hall

### Annual Parish Meeting

Monday, 17th March 8 pm Village Hall